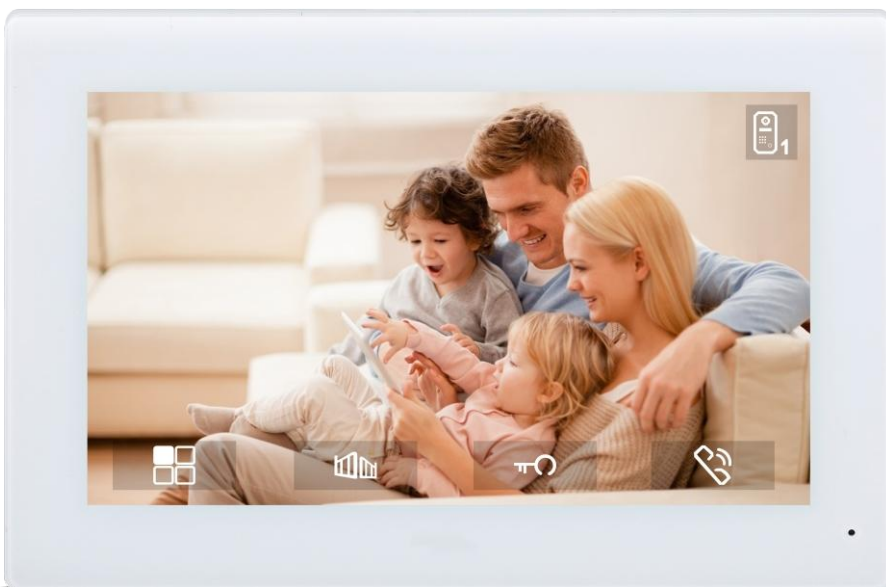


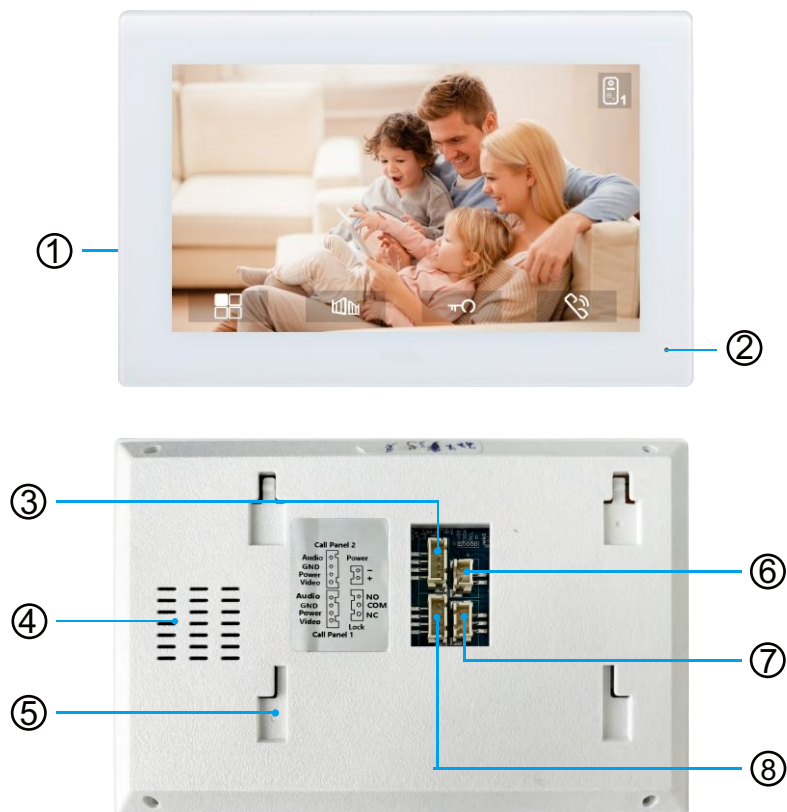
Doorbell

Instruction Manual V3.0



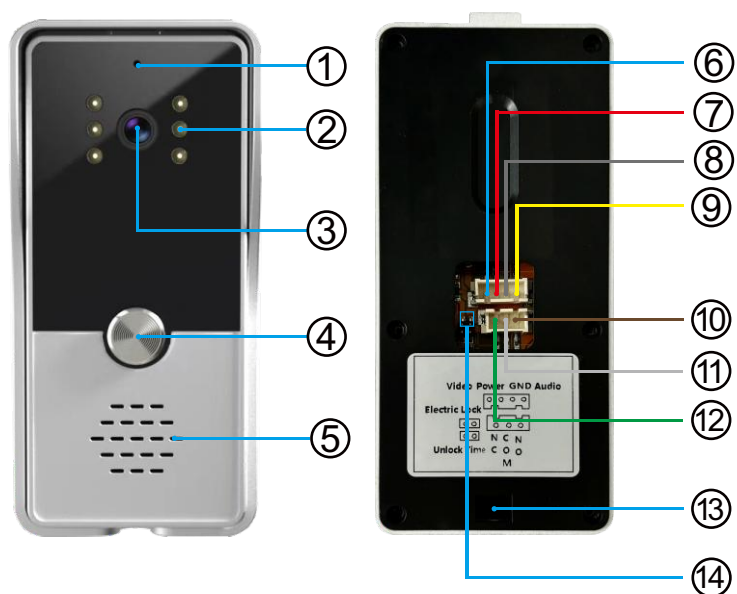
Before using this product, read the Quick Guide carefully and save it for future referenceV3.0.

Indoor Monitor (4 Wires)



- ① Screen
- ② Microphone
- ③ Call Panel 2/Audio GND Power Video
- ④ Speaker
- ⑤ Bracket slot
- ⑥ Power/ -+
- ⑦ Lock/ NO COM NC
- ⑧ Call Panel 1/Audio GND Power Video

Call Panel (4 Wires)



- ① Microphone
- ② LED
- ③ Camera
- ④ Call Button
- ⑤ Speaker
- ⑥ Blue: Video
- ⑦ Red: Power
- ⑧ Black: GND
- ⑨ Yellow: Audio
- ⑩ Brown: NO
- ⑪ White: COM
- ⑫ Green: NC
- ⑬ Screw Hole
- ⑭ Jumper

Call Panel Installation



Drilling

Drill screw holes at proper location for wall mounting plate.



Fix Wall Mounting Plate

Fix the wall mounting plate to the wall with 2 screws.



Install Call Panel

Insert the call panel to the plate and fix it with a screw.

Indoor Monitor Installation



Drilling

Drill Screw holes at proper location for wall mounting plate.



Fix Wall Mounting Plate

Fix the wall mounting plate to the wall with 2 screws.

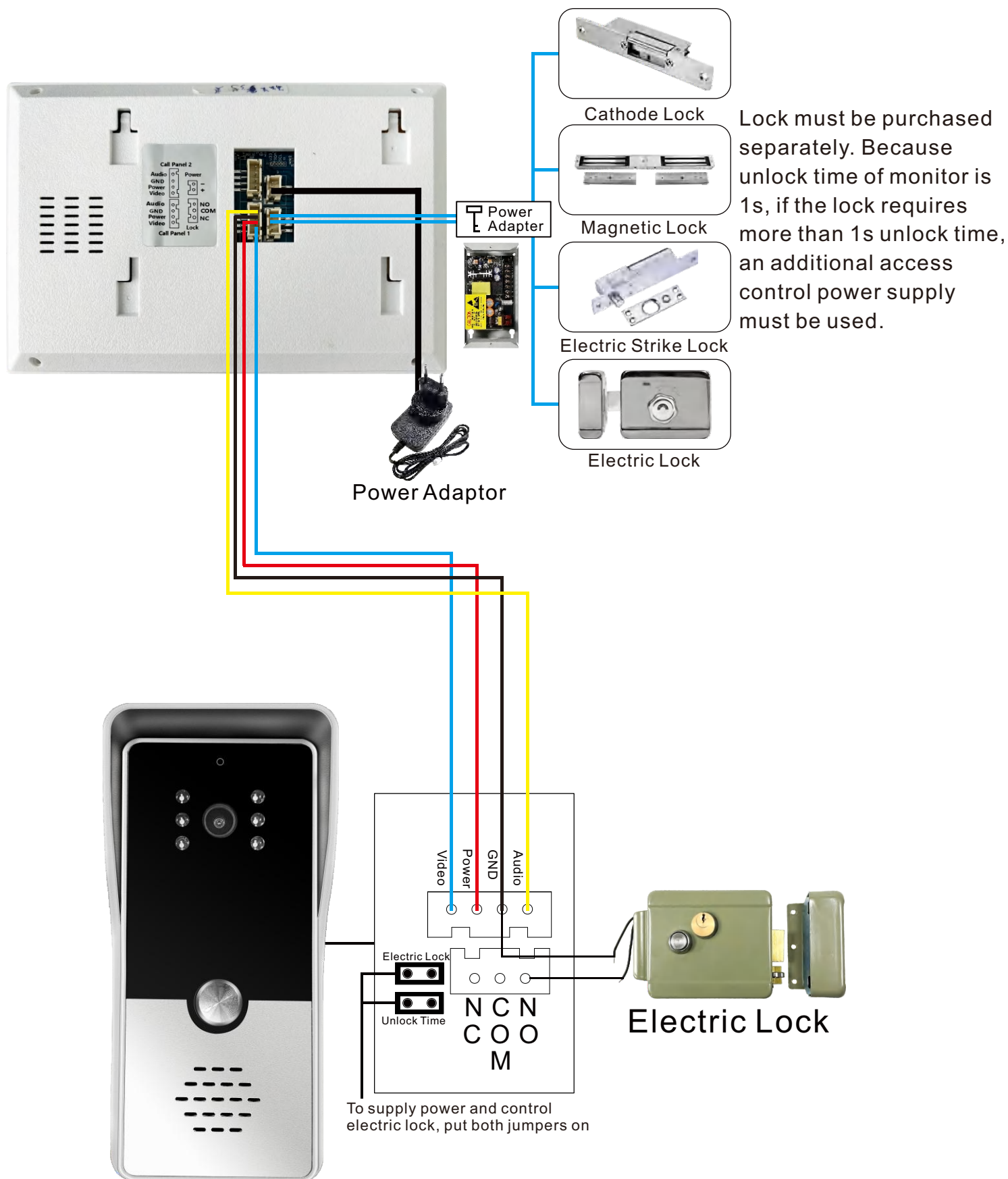


Hang Indoor Monitor

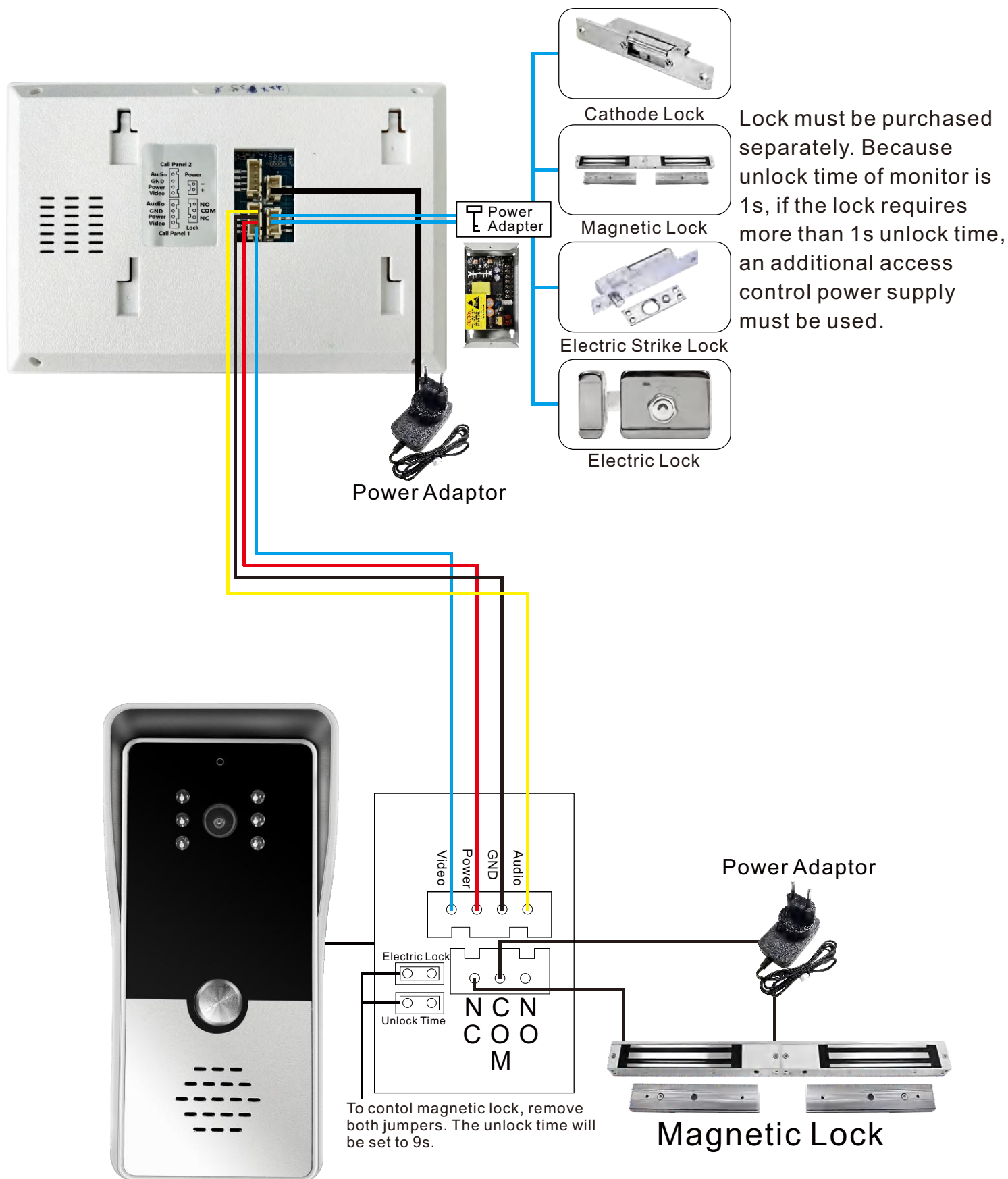
Hang the indoor monitor on the wall mounting plate tightly.



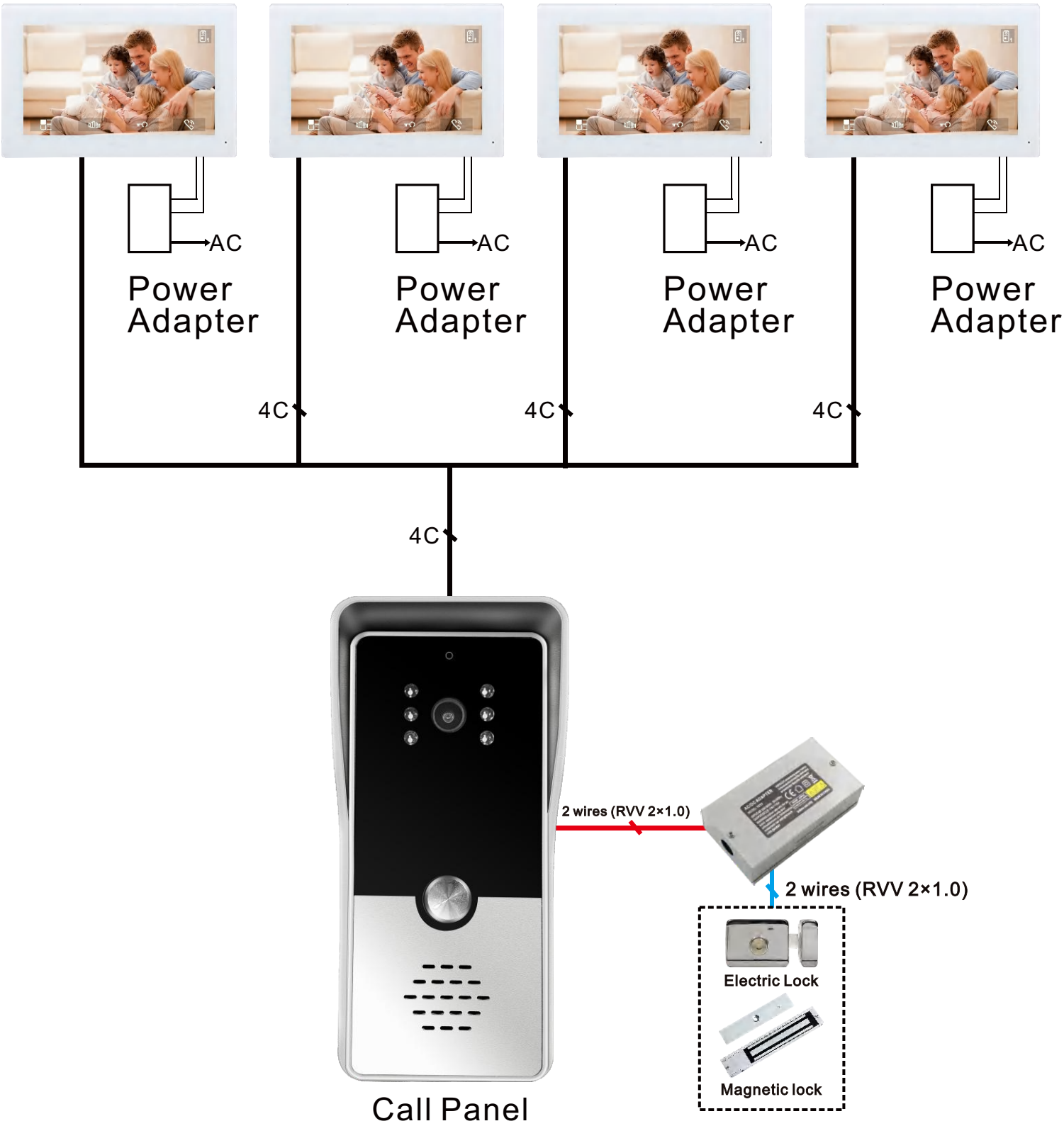
Wiring Diagram II



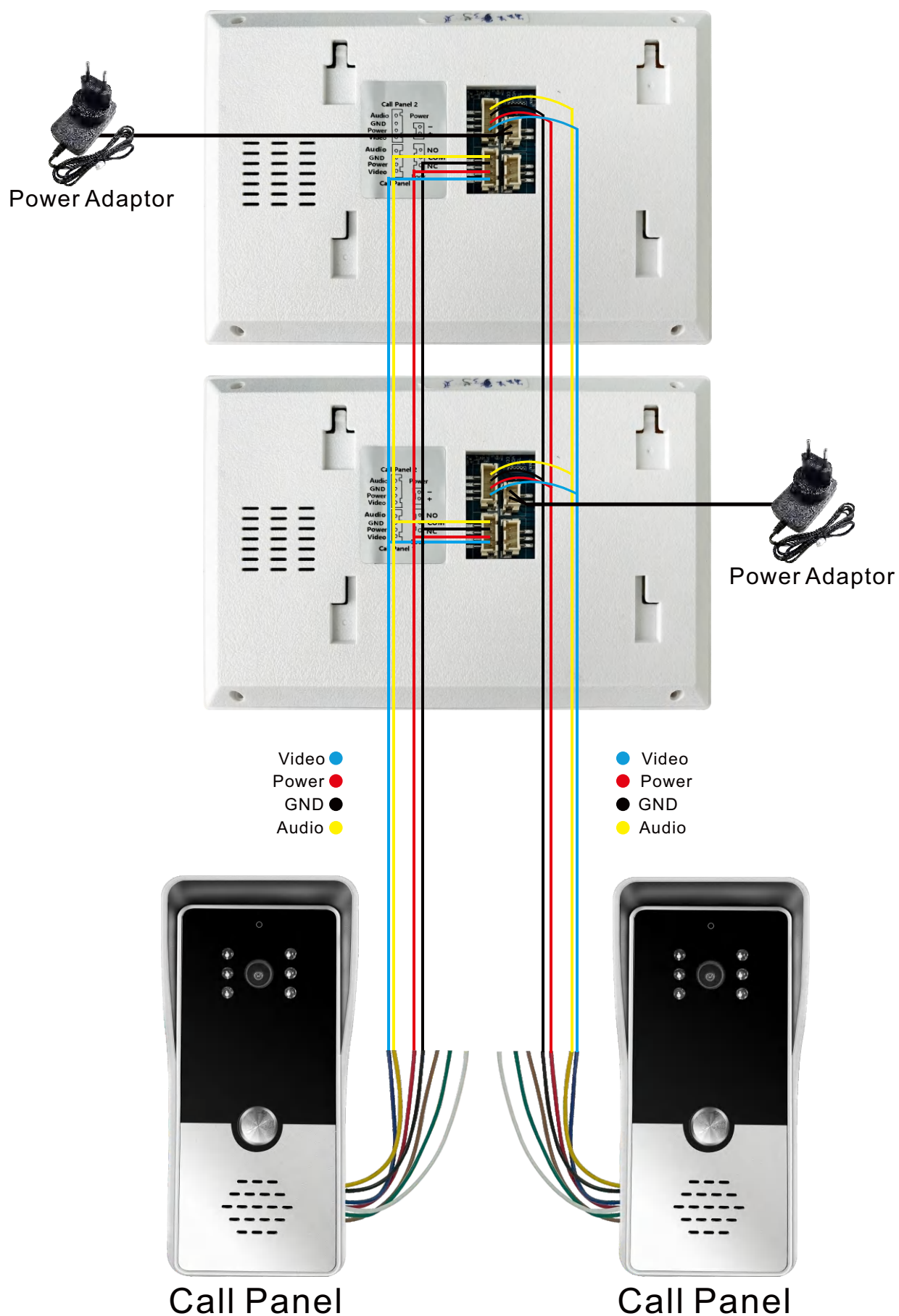
Wiring Diagram II



Analog System -Villa 1 to 4 Diagram



Call Panel System- Villa 2 to 4 Diagram(4 Wires)



Features

1. Video Intercom: Video intercom between household and the visitor.
2. Monitoring: Show the image outside call panel 1 or call panel 2.
3. Menu: Display settings and volume settings.
4. Unlock: The monitor can unlock not only the lock connected to call panel 1 or 2 but also the lock connected to the monitor.

Attention: Lock 1 icon refers to the lock connected to the monitor; Lock 2 icon refers to the lock connected to the call panel 1 or call panel 2.

7 Inch Touch Screen Indoor Monitor User Interface



Specifications

Indoor Monitor

- Display: 7 inch LCD 800*480
- Power: DC 18V 1A (Powered By Adaptor)
- Material: High Quality ABS + Acrylic Surface+ Touch Screen
- Operating Temperature:-20°C~55°C
- Color: White/Black
- Outline Dimensions: 190(L)x18(W)x122(H)mm

Villa Call Panel

- Camera: HD 1000TVL
- Viewing Angle: 100°
- Night Vision: White light, 6PCS White White LED
- Accessory: Rain Cover
- Waterproof: IP 65
- Power: DC18V 1A (Powered By Indoor Monitor)
- Material: High Quality ABS + Acrylic Panel + Press Button
- Operating Temperature:-30°C~70°C
- Color: Silver And Black
- Outline Dimensions: 62(L)*38(W)*132(H)mm

Operations

Video intercom:

To call the monitor, press the call button on the call panel 1 or press that on the call panel 2. The monitor will ring and show the image outside call panel 1 or call panel 2. Then, touch the according buttons on the screen to answer the call/ to unlock the door lock/ to hang up.

Monitor:

1. When the monitor is standby, touch the screen to turn on the screen and show the image outside call panel 1.
2. Touch the call panel icon to switch between the image outside call panel 1 and image outside call panel 2.
3. During monitoring, touch menu button to adjust brightness, color, contrast and volume.
4. During monitoring, touch unlock button to unlock the door lock.
5. During monitoring, touch hang up button to finish monitoring.

FAQ

| NO | Questions | Reason | Answers |
|----|--|--|--|
| 1 | Why can't call panel call indoor monitor? | 1. The wiring may be wrong. 2. Wires are not well connected. | 1. Please check whether the wiring is correct. 2. Please check whether wires are well connected. |
| 2 | Before installation, it works well. Why can't call panel call indoor monitor after installation? | 1. The cable quality is bad. 2. The power supply voltage is insufficient. | 1. Use a good quality cable. 2. Use a power adapter with output DC18V-24V, if the network cable is over 40 meters. |
| 3 | Why can't unlock? | 1. The wiring may be wrong. | 1. Please check whether the wiring is correct. 2. Please check whether an additional access control power supply is needed. 3. For further help, please check with our technical team. |