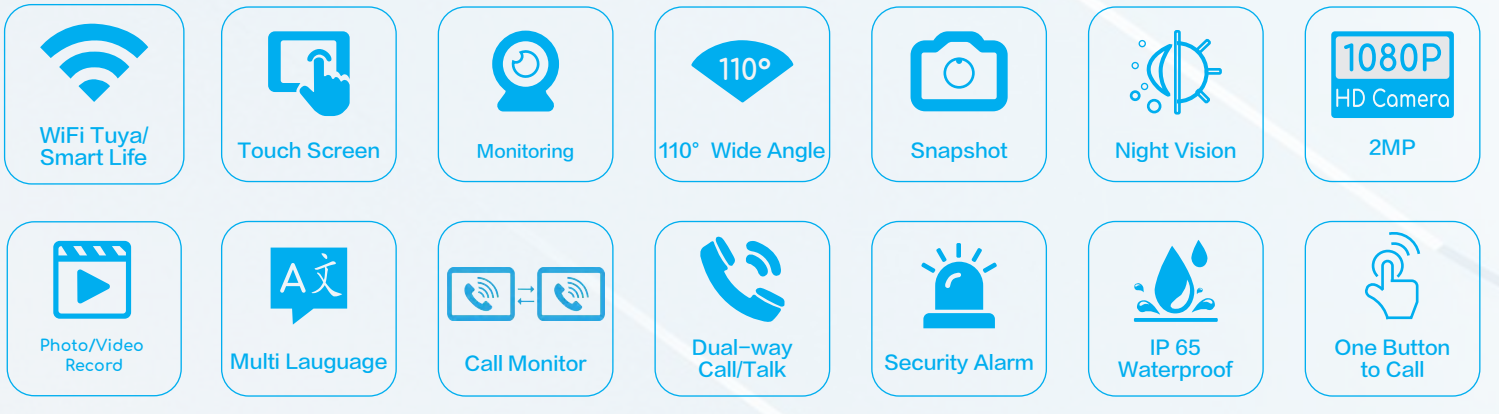


# 7 Inch IP Villa Kit Video Door Phone Intercom



  
**White**



  
**Black**



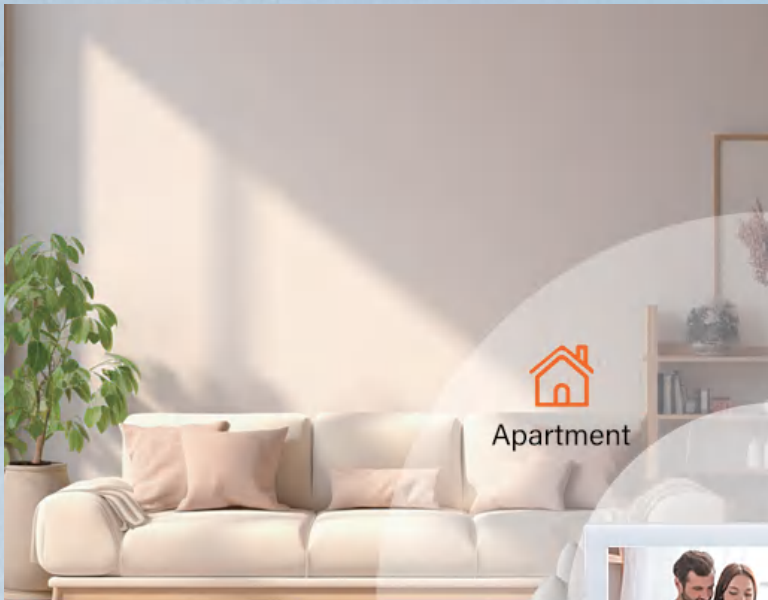
**SKY-IP-M72T**



**SKY-IP-P901**

*Smart and Security For Your Home*

# Suitable For Various Environments



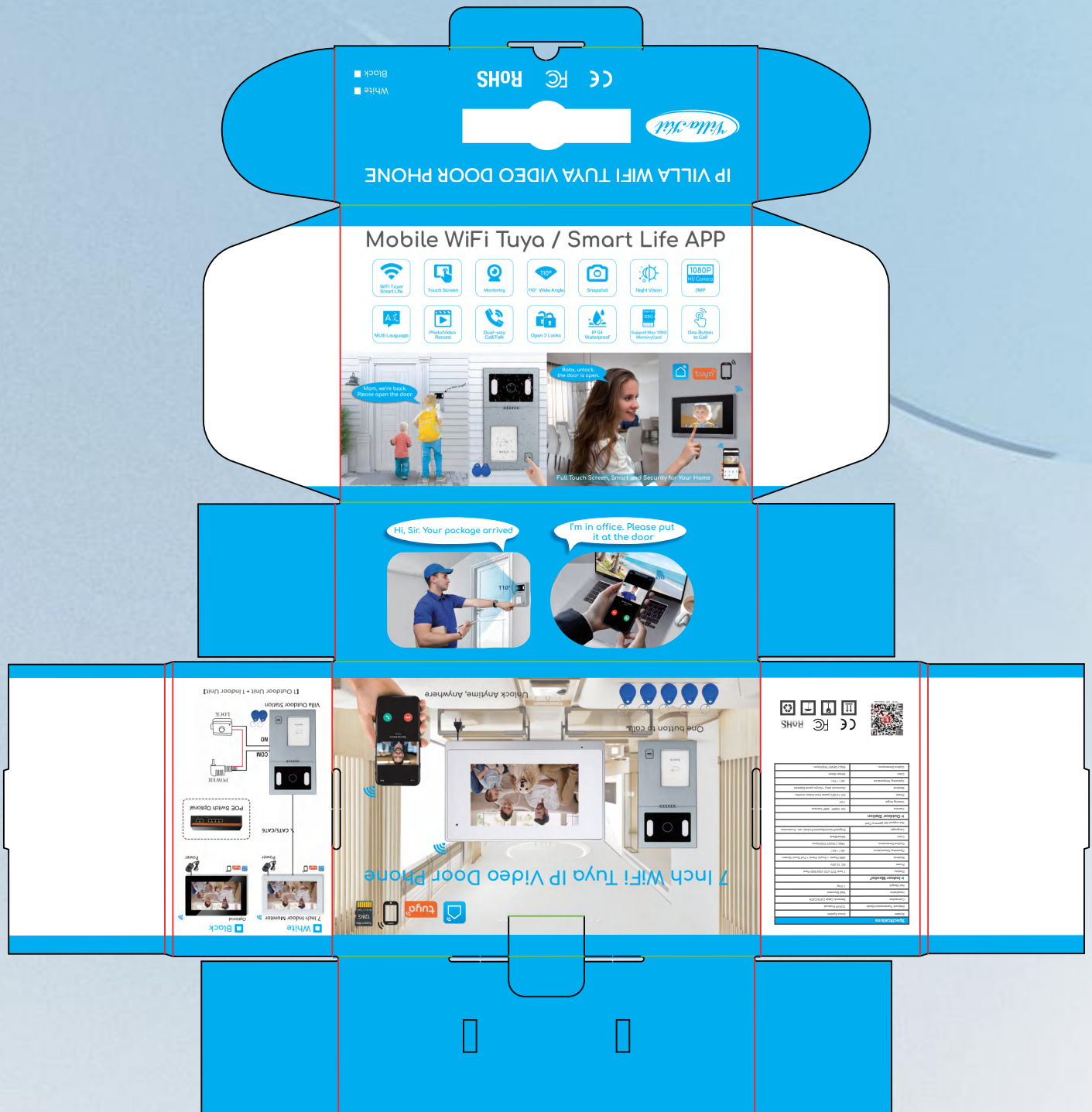


# Beautiful & High Quality Package With Lifting Handle



- 1.Net Weight: 1.3 kg
- 2.Carton Size: 12 Kits / Carton

# Customize Box Package For Free If Over 600 Kits





# Villa Kit Accessories



Note: Tapered Iron Also Included For India And Some Special Areas



# 7 Inch IP Indoor Monitor (White)



Multi Language



Touch Screen



Snapshot



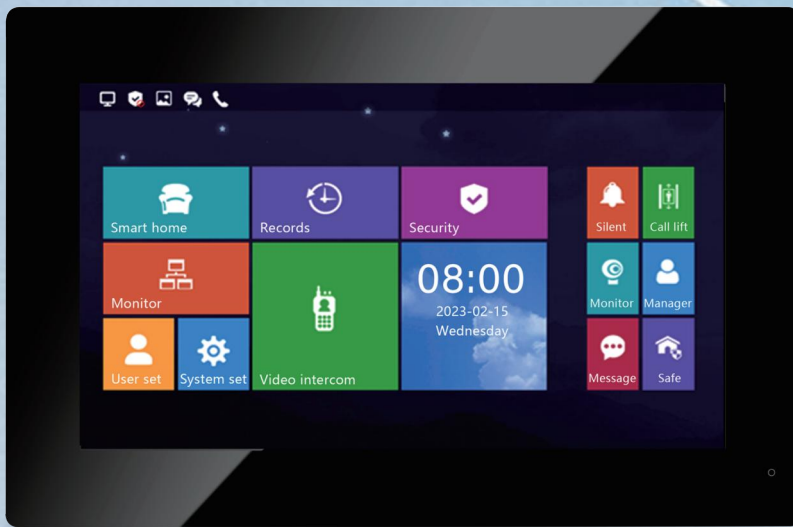
Dual-way Call/Talk



Monitoring



Security Alarm



122mm



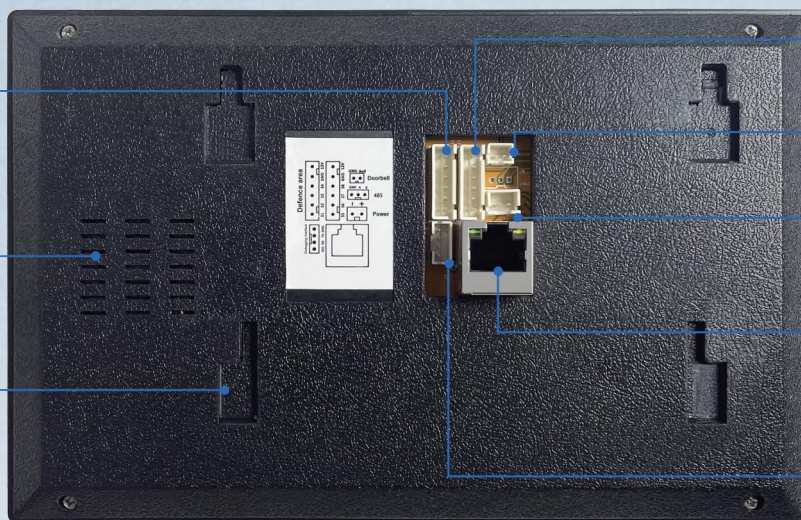
190\*mm

17mm

Connect detector:  
S1 S2 S3 S4 GND 12V

Speaker

Bracket slot



Connect detector:  
S5 S6 S7 S8 GND 12V

Bell GND:  
Connect doorbell

V+ V-:  
Connect Power Adapter

RJ45

Debug Software:  
VCC RX TX GND



# 7 Inch IP Indoor Monitor(Black)



Multi Language



Touch Screen



Snapshot



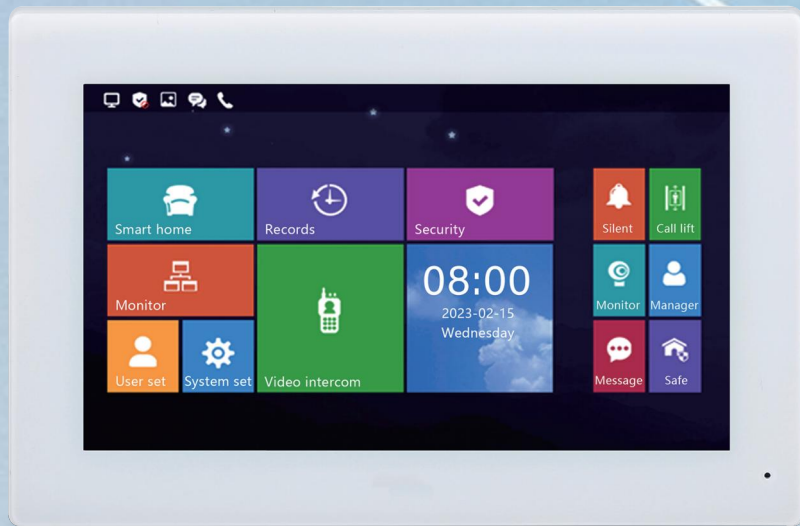
Dual-way Call/Talk



Monitoring



Security Alarm



122mm

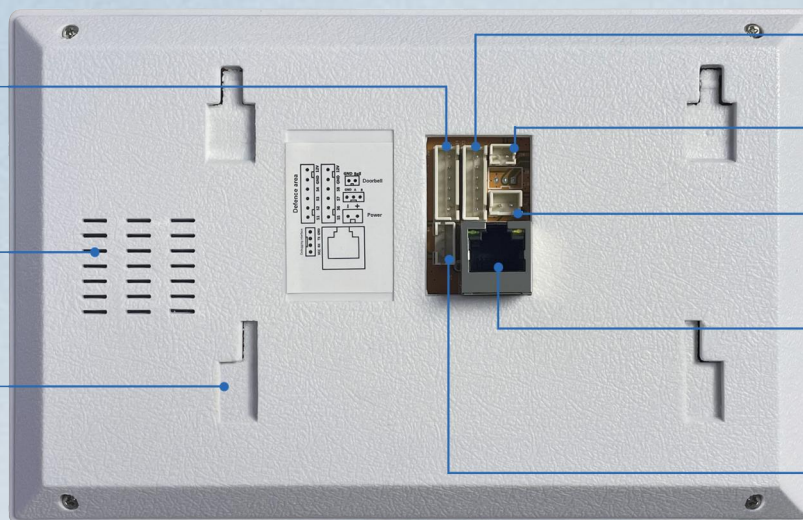


17mm

Connect detector:  
S1 S2 S3 S4 GND 12V

Speaker

Bracket slot



Connect detector:  
S5 S6 S7 S8 GND 12V

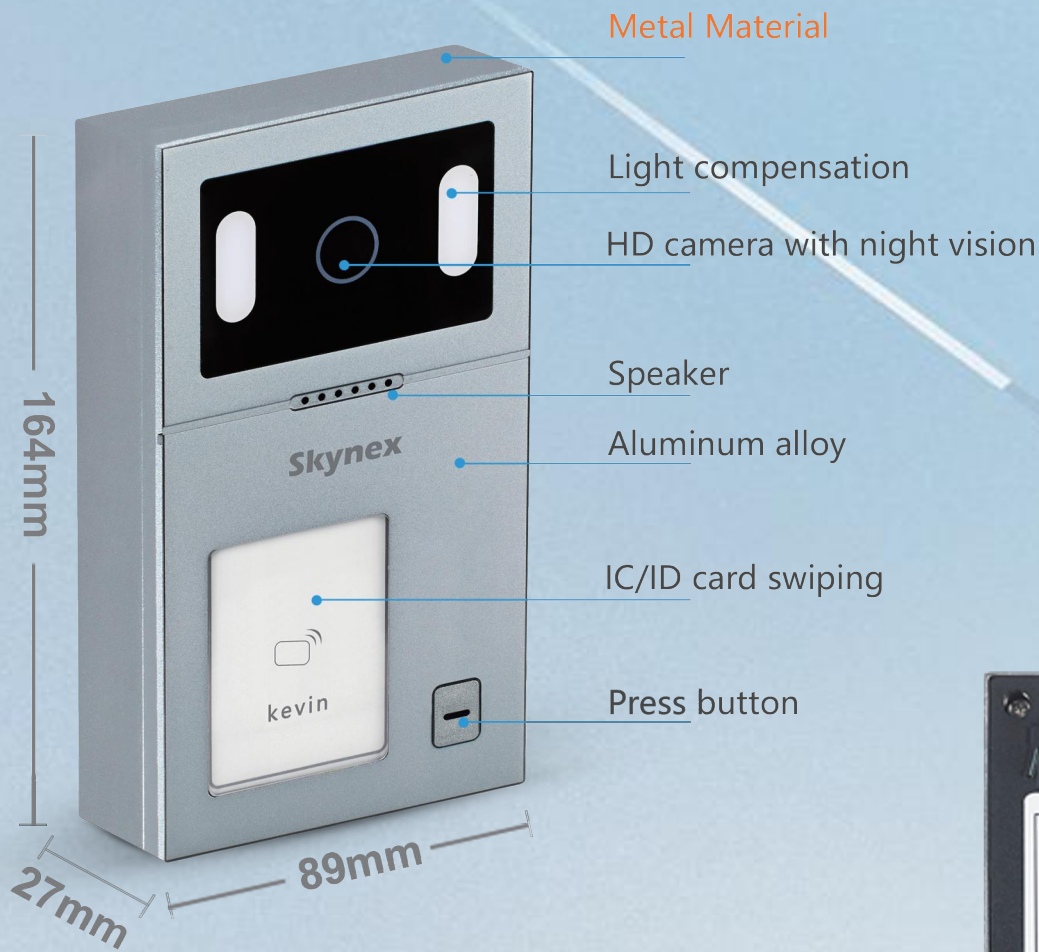
Bell GND:  
Connect doorbell

V+ V-:  
Connect Power Adapter

RJ45

Debug Software:  
VCC RX TX GND

# Outdoor Station Details



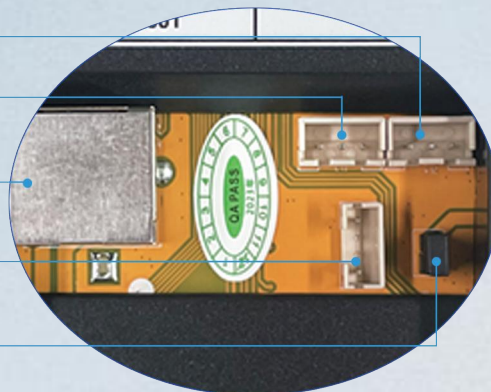
NC GND NO

NC COM NO

RJ45

GND ADDR SW DET

Magnetic lock Power supply





# Dual-way Call / Talk / Video Intercom and Unlock

Wall Mounted



Day Vision



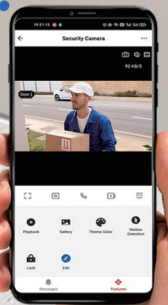
The door is open, please come in



Night Vision

Hello! Package Delivery

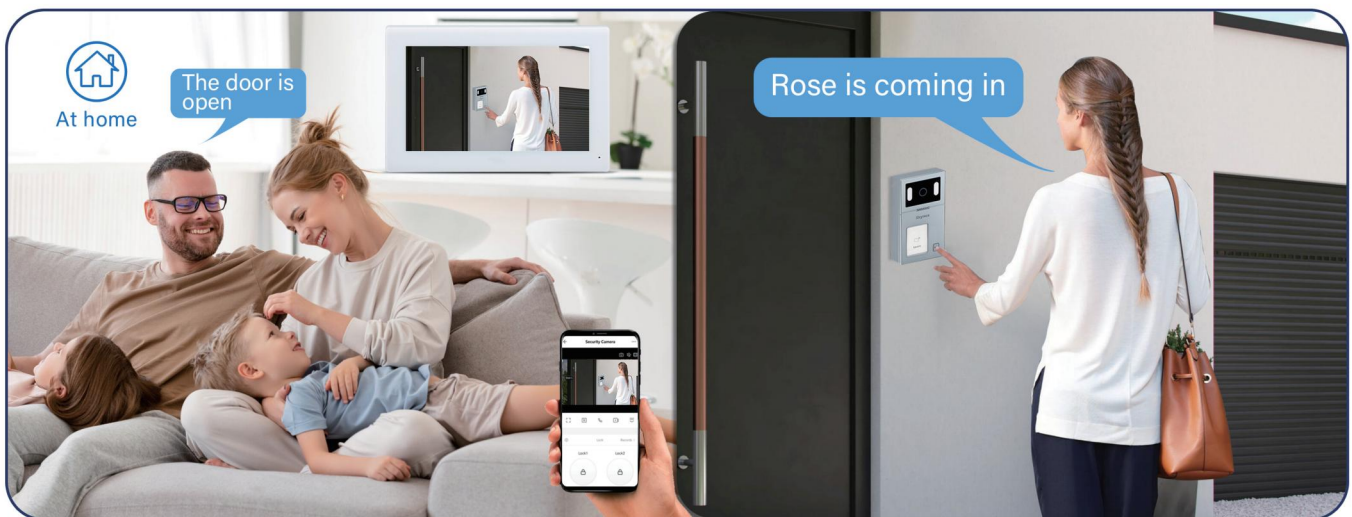
IP Waterproof



# Multi Working Mode Convenient for Your Life

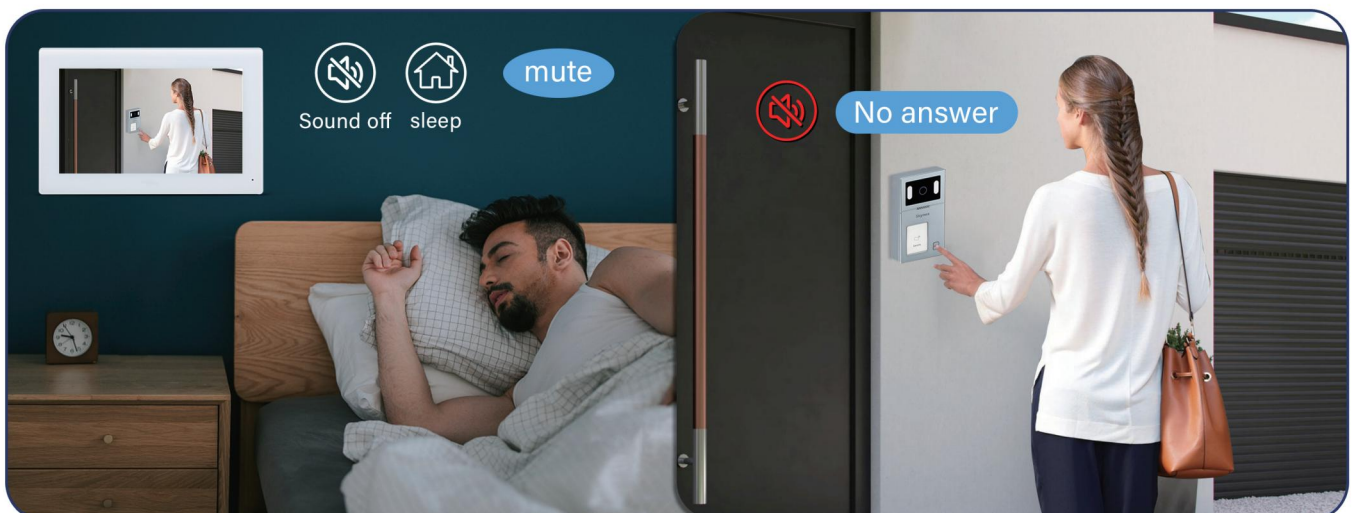
## At Home Mode

When visitor press one button to call, indoor monitor will ring to remind resident to check who is calling and talk with him. Then click the unlock button to open the door.



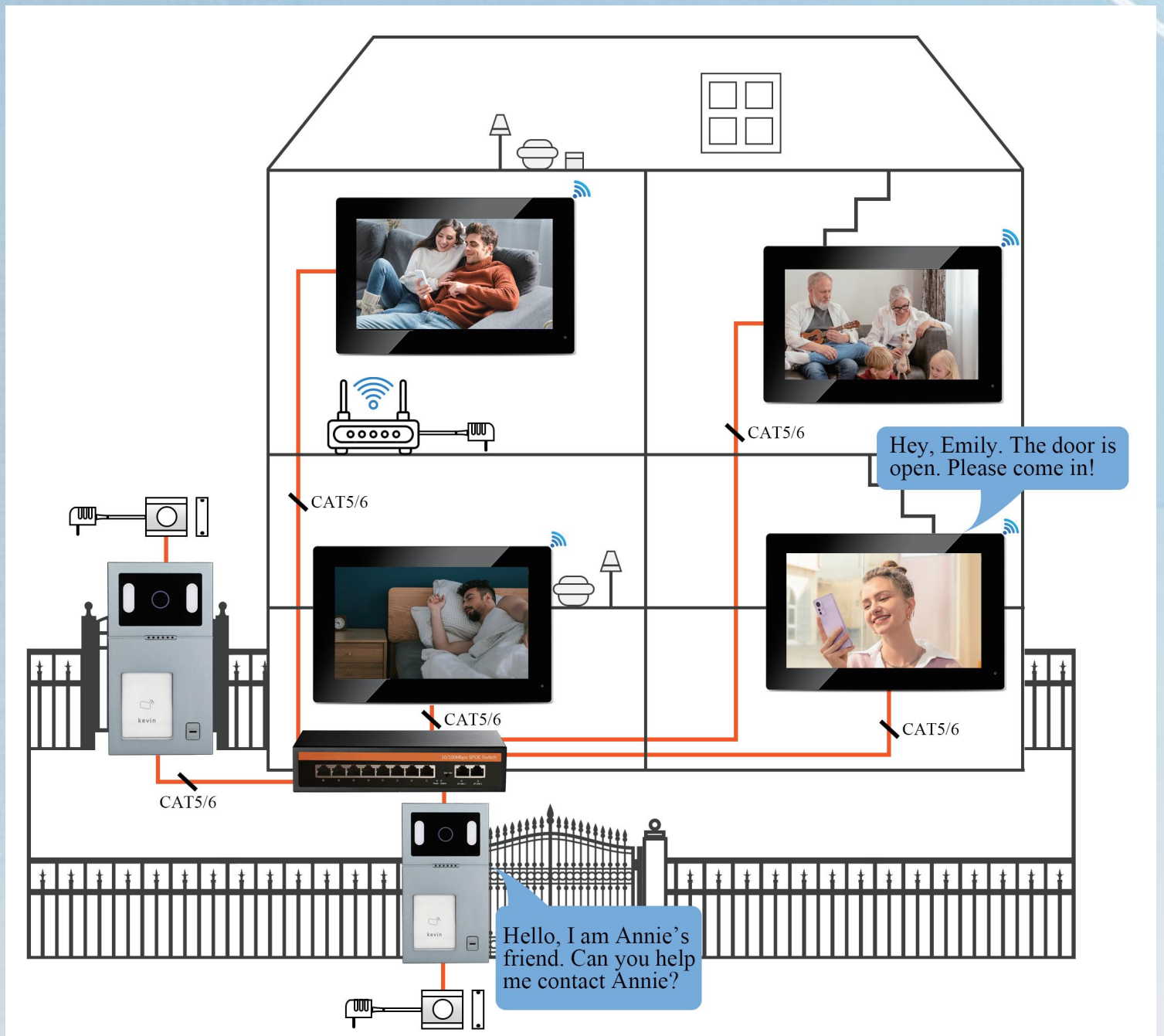
## Sleep Mode

The resident can click mute button if somebody call you at night. It won't bother you if you open mute mode.





# Visitor One Button To Call



Different rooms can install multi indoor monitors up to 99 pcs when connect with POE , When visitor coming, one button to call , all indoor monitor screen will ring can see outside who is calling , talk and unlock . If one answer the call, other screens will hang up.

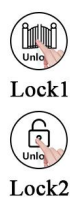
# Room To Room Call



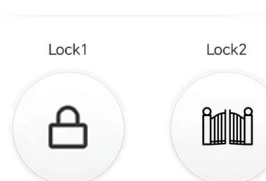
multi indoor monitors can be installed in different rooms , support room to room call.



# Multi Unlocking Methods



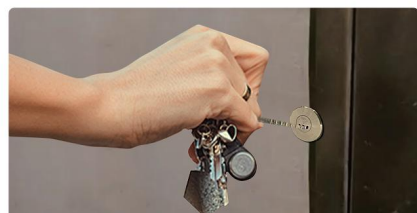
**Indoor Monitor Unlock**



**Remote to Unlock**

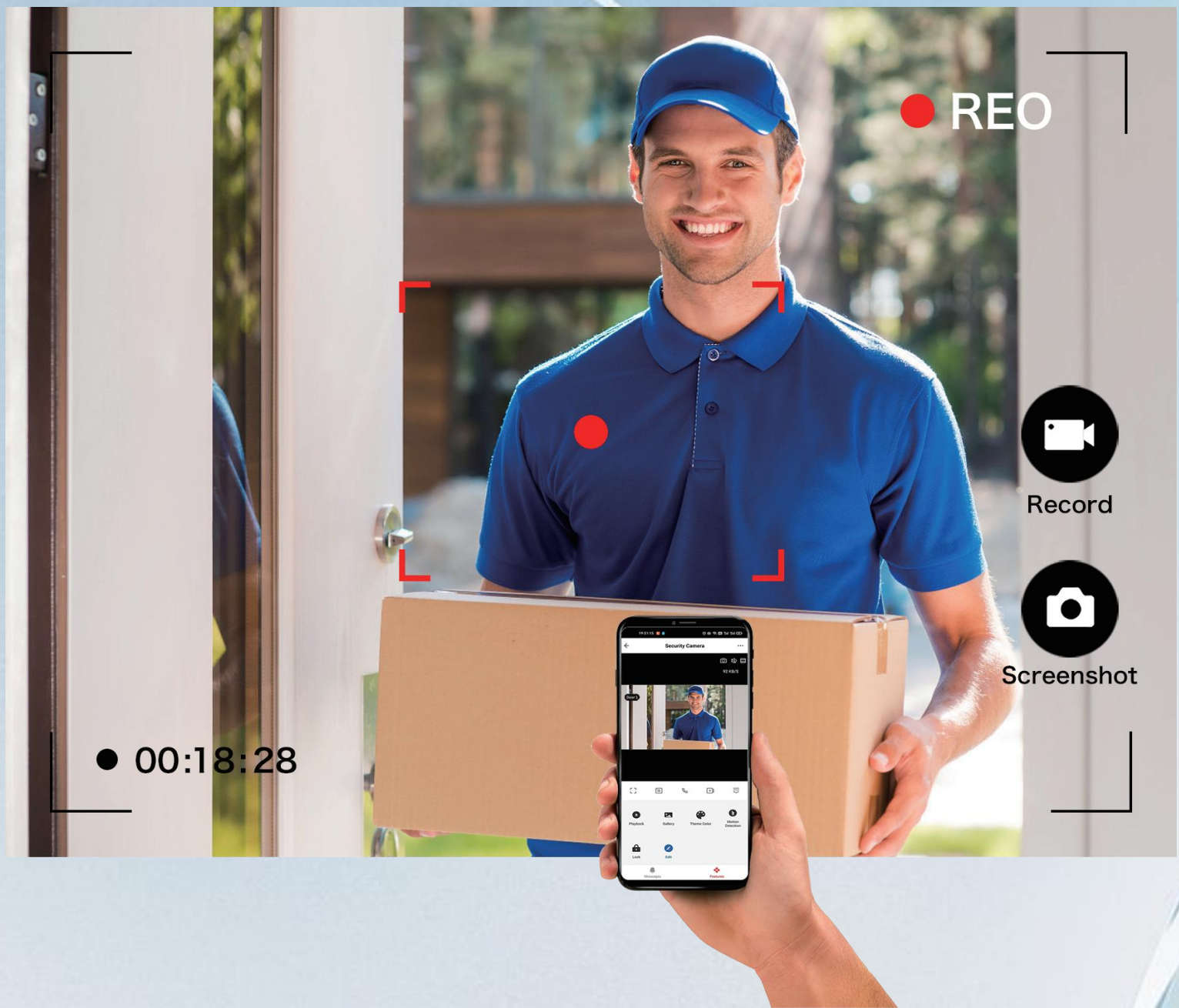


**Scan Card unlock**



**Key to Unlock**

# Screenshot & Photo / Video Record





# IP Waterproof & Durable Use



IP waterproof



Dustproof



Weatherproof



Low & High Temperature:  
-40°C-70°C



# Night Vision Camera Clear Image





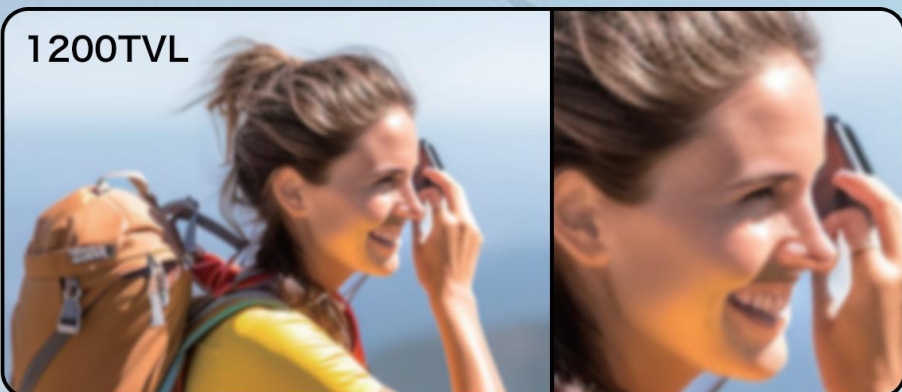
# HD 1080P , 2MP Doorbell



1080P



1200TVL



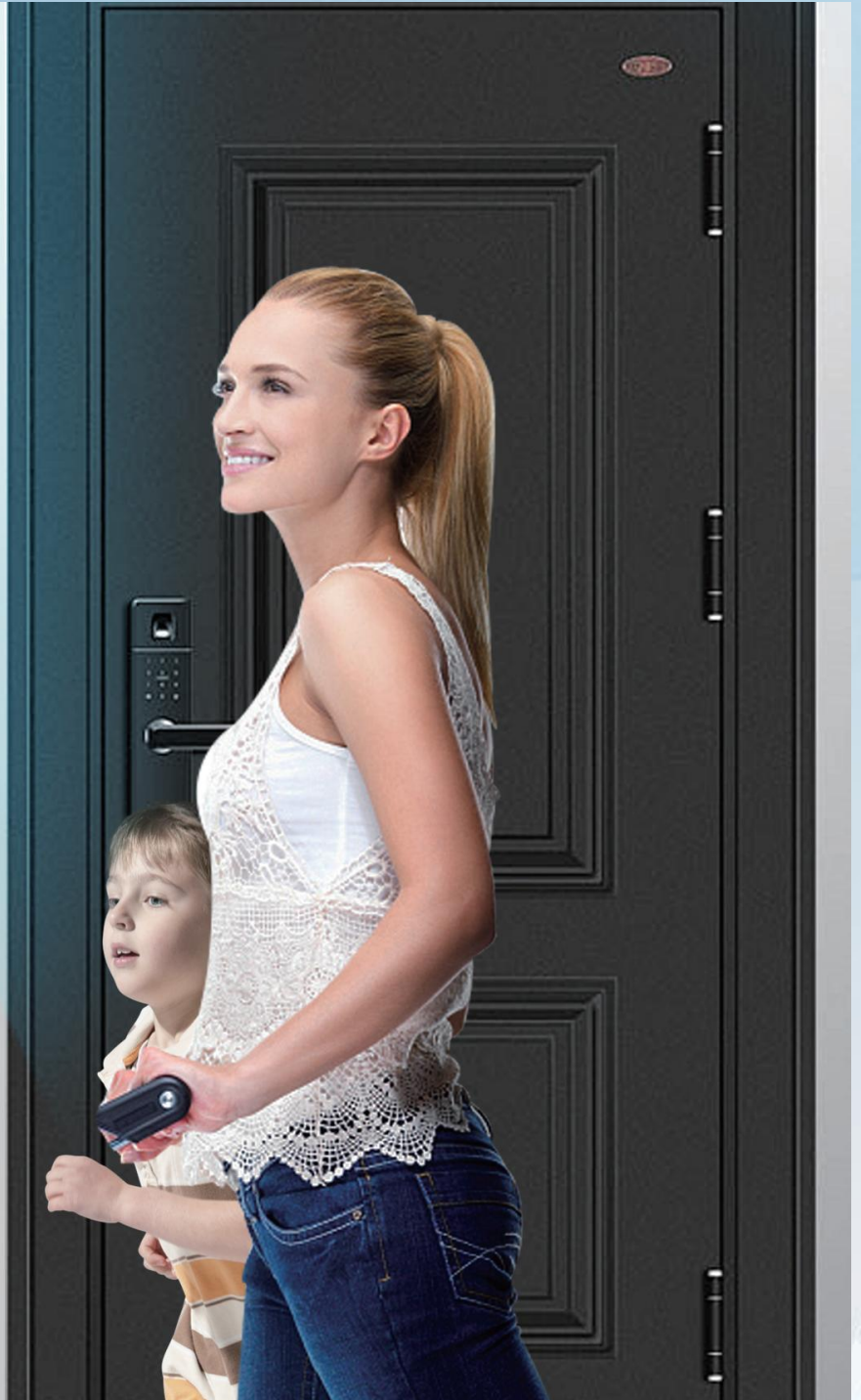
800TVL



# Wide Angle , Easy To Identify



Horizontal Wide Angle 110°  
Vertical Wide Angle 70°





# Monitor Villa Outdoor Station And CCTV Camera

Monitor

Door Station

Call Panel

IP Camera

Back



Monitor

Door Station

Call Panel

IP Camera

Back



Monitor

Door Station

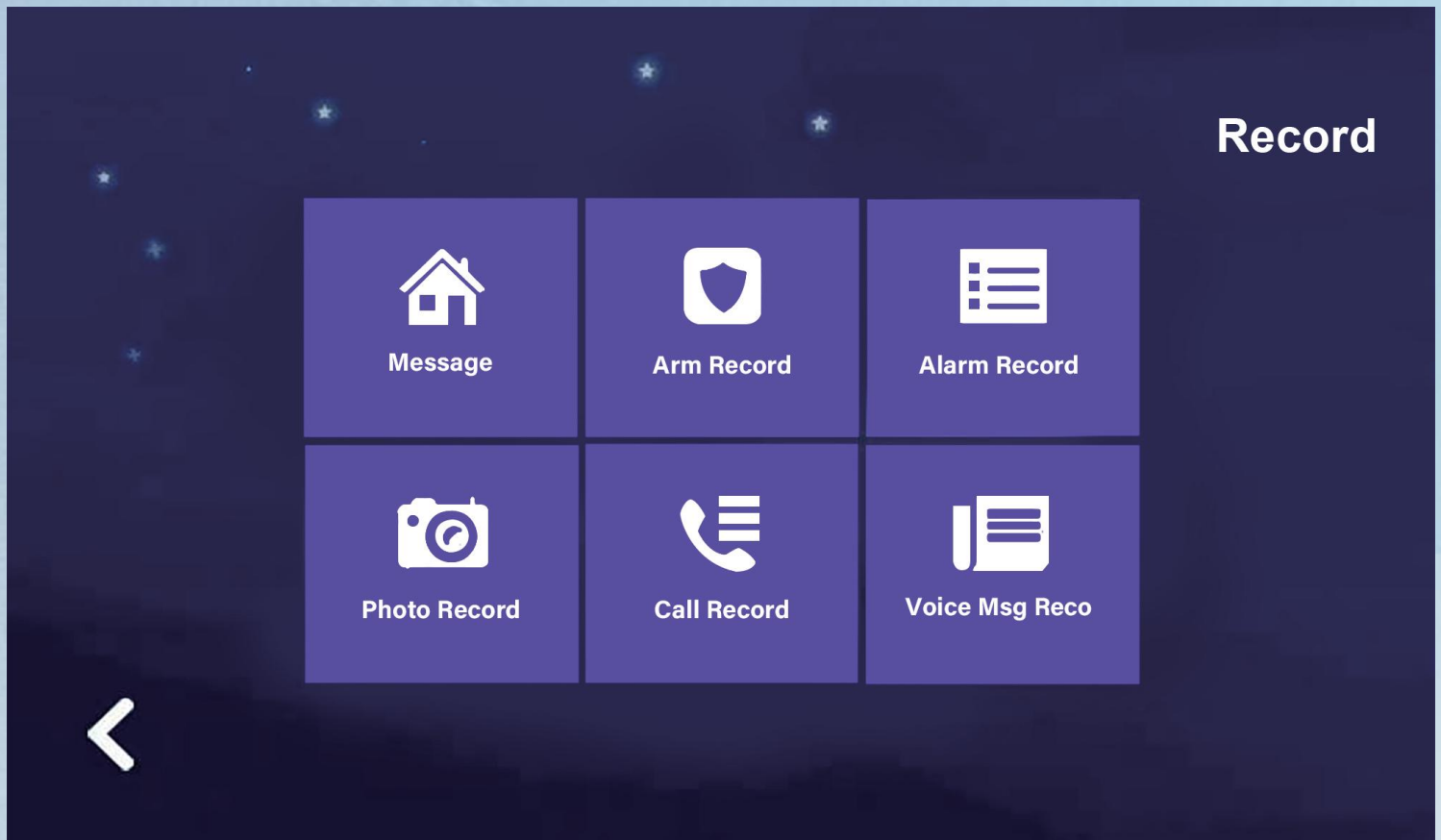
Call Panel

IP Camera

Back



# Records

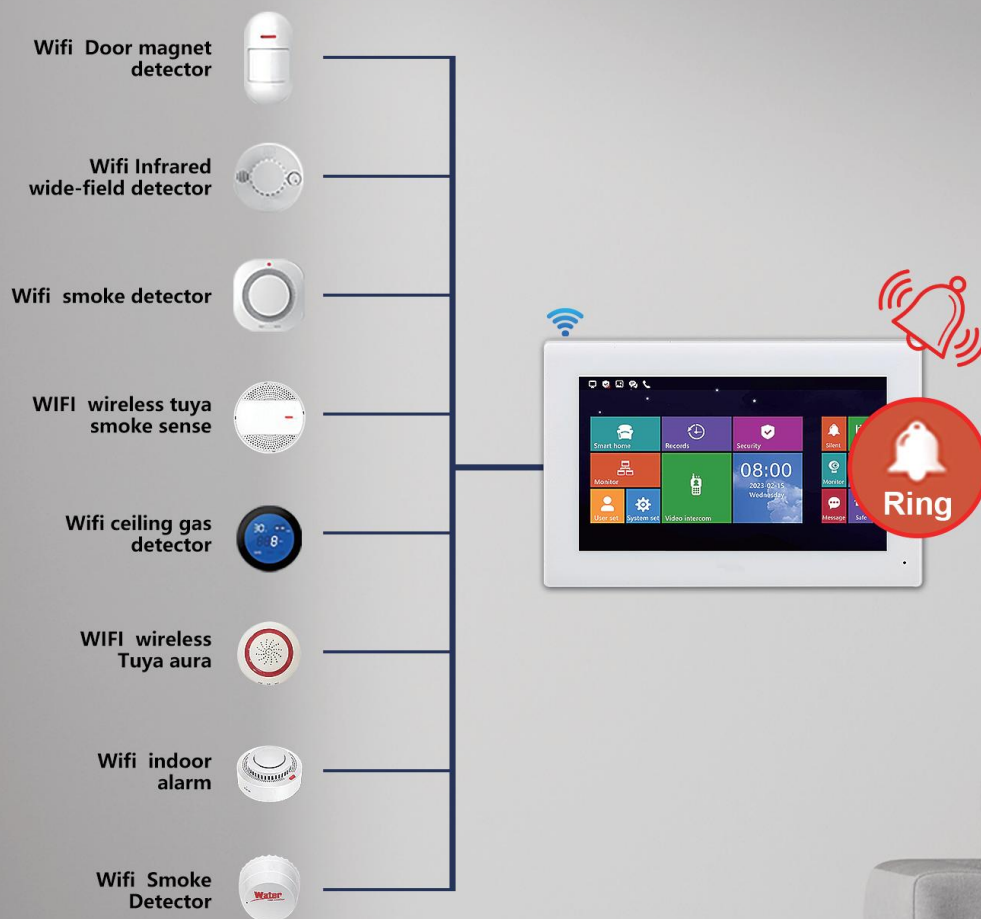


- ☒ Record 8 Photos
- ☒ Record 8 Leave Messages
- ☒ Record 10 Calls
- ☒ Take A Photo Automatically When Calling From Outdoor Unit



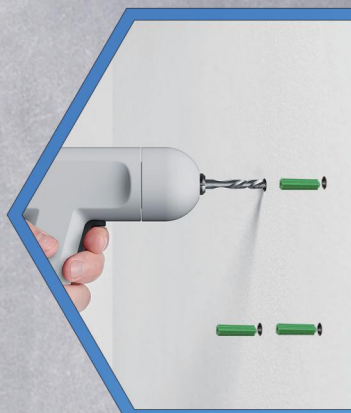
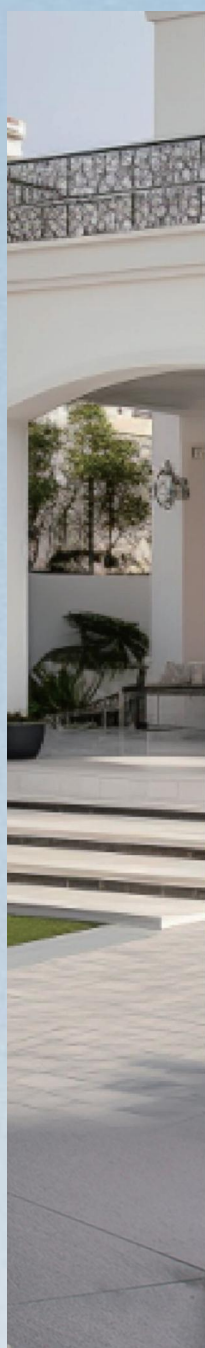
# Security And Alarm

## 8 Defense Zones



**8 Defense Zones Can Be Connected, Such As Gas Detector, Smoke Detector. An Automatic Alarm Will Be Raised If Anything Is Abnormal.**

# Outdoor Station Installation



## Drilling

Drill screw holes in the location of the wall mounting plate



## Fix wall mounting plate

Fix the wall mounting plate to the wall with 2 screws



## Install outdoor station

Insert the outdoor station to the plate and fasten it with a screw.

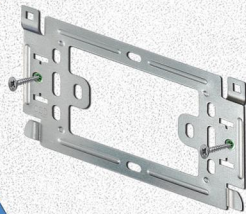


# Indoor Monitor Installation



## Drilling

In the reserved hole on the wall, drill screw holes in the location of the wall mounting plate



## Fix wall mounting plate

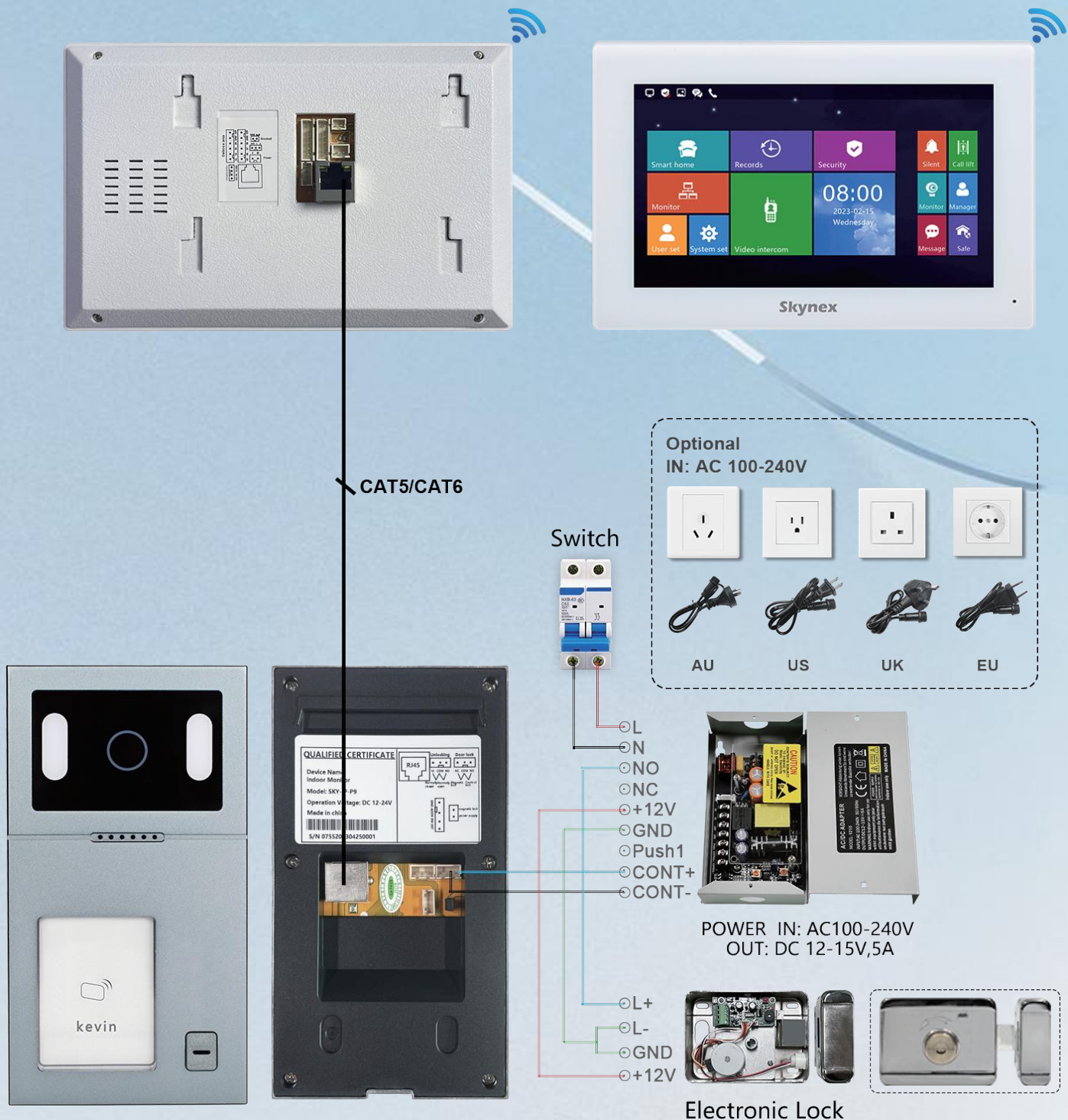
Fix the wall mounting plate to the wall with 2 screws



## Hook indoor monitor

Hook the indoor monitor to the wall mounting plate tightly

# IP System—Villa 1 to 1 Diagram

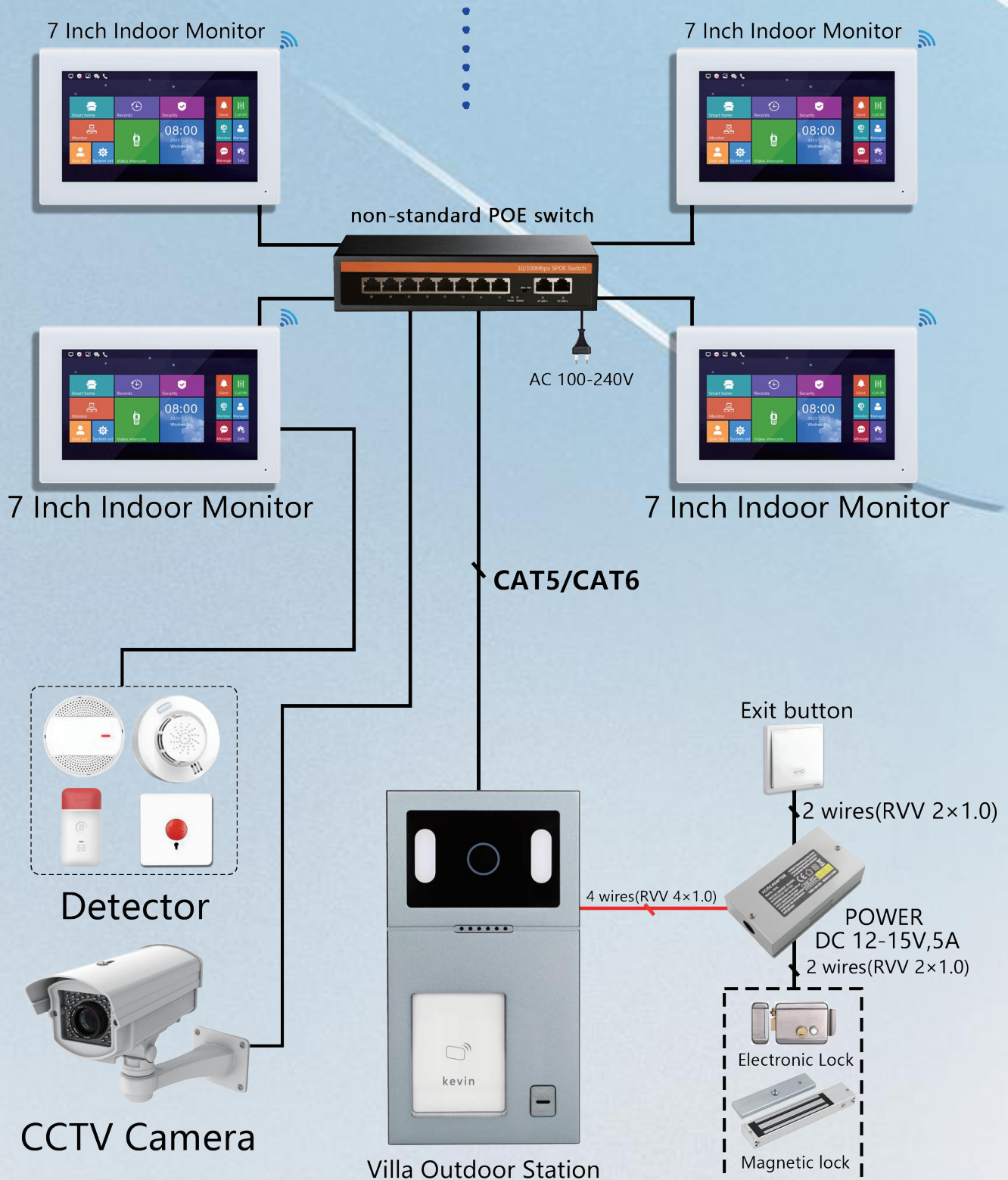


1 Ostation + 1 Indoor Monitor: Connected Directly Through Power Adapter  
Indoor Monitor Supply Power To Outdoor Station.



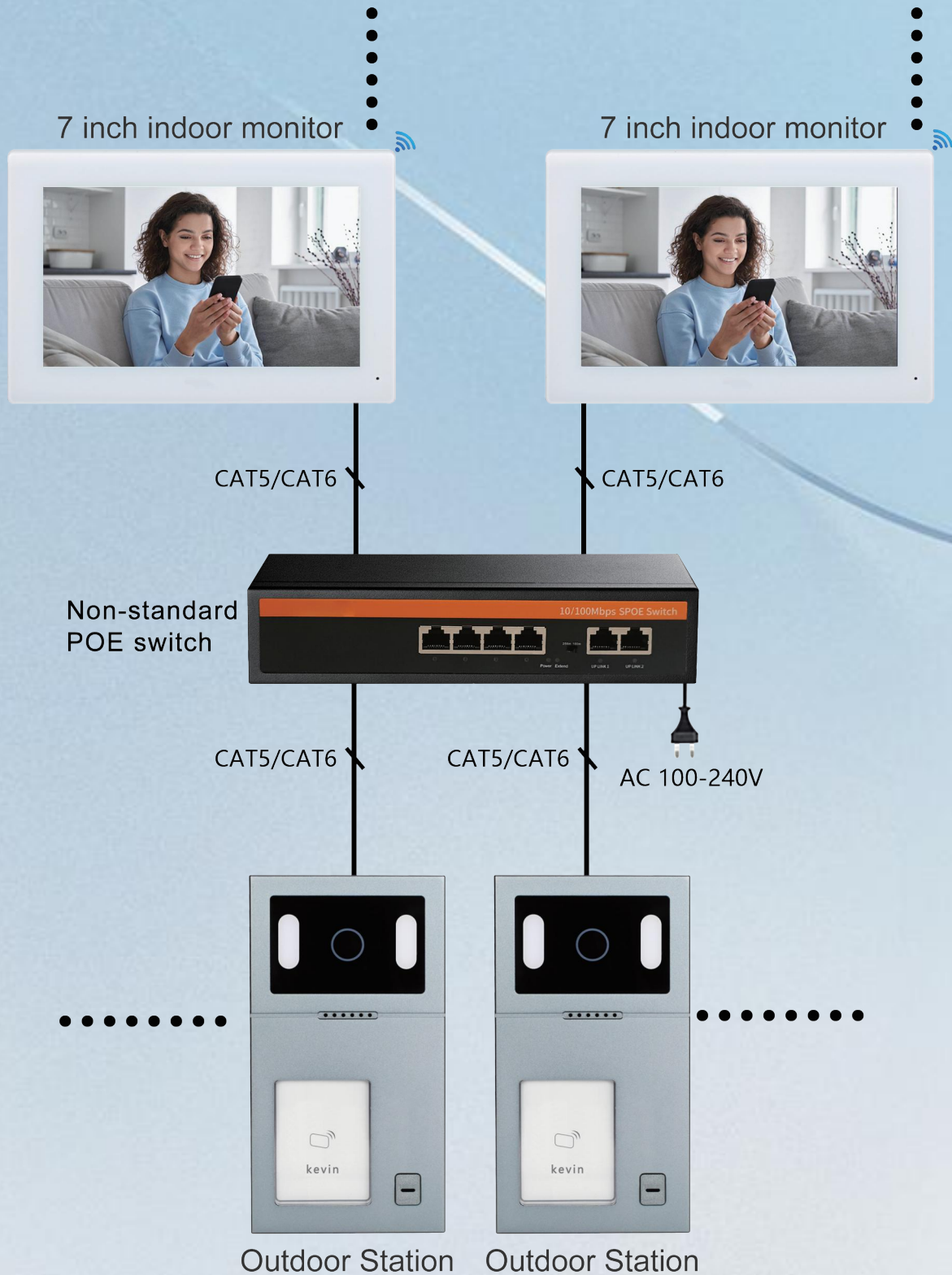
# IP System -Villa 1 to 99 Diagram

Up to 99 pcs indoor monitor



Support Multiple Call Panels, Support Multiple Indoor Monitors;  
With Non-standard POE , Support Up to 99 Indoor Monitors And Outdoor Units..

# IP System- Villa 99 to 99 Diagram



Support Multiple Call Panels, Support Multiple Indoor Monitors;  
With Non-Standard POE , Support up to 99 Indoor Monitors And Outdoor Units..





# Customize Your Logo For Free If Over 200 Pcs



## UI and Language Can Be Customized



**UI Interface**



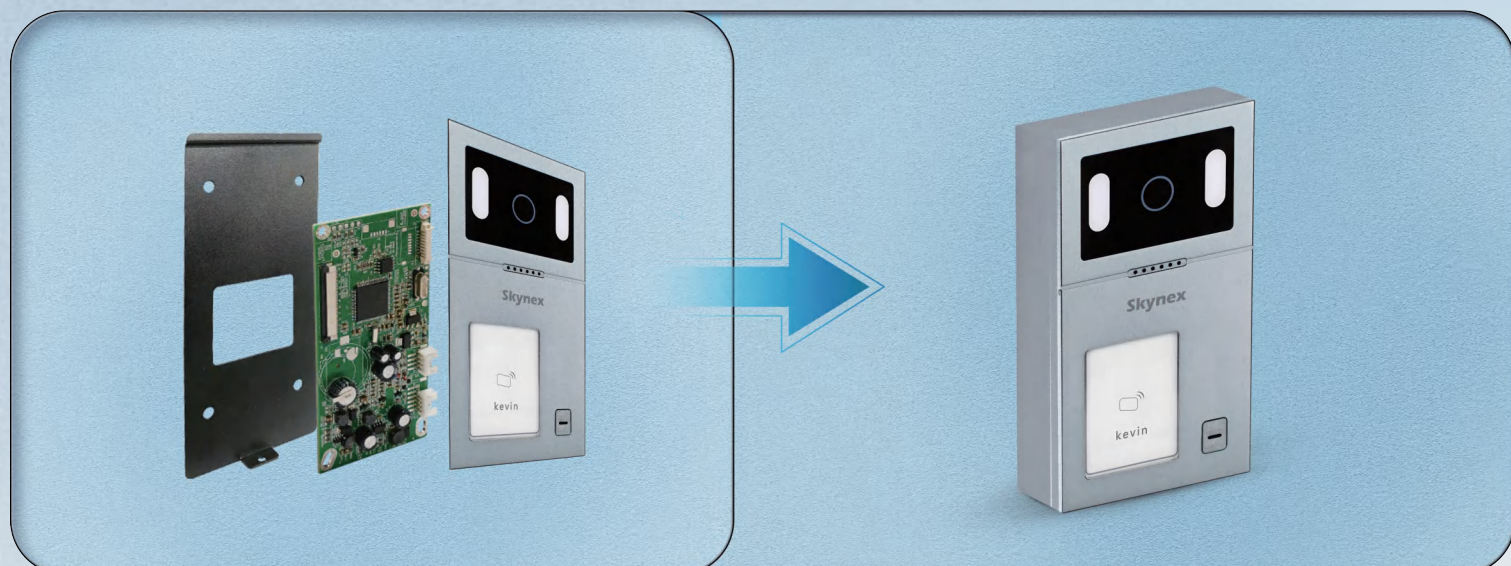
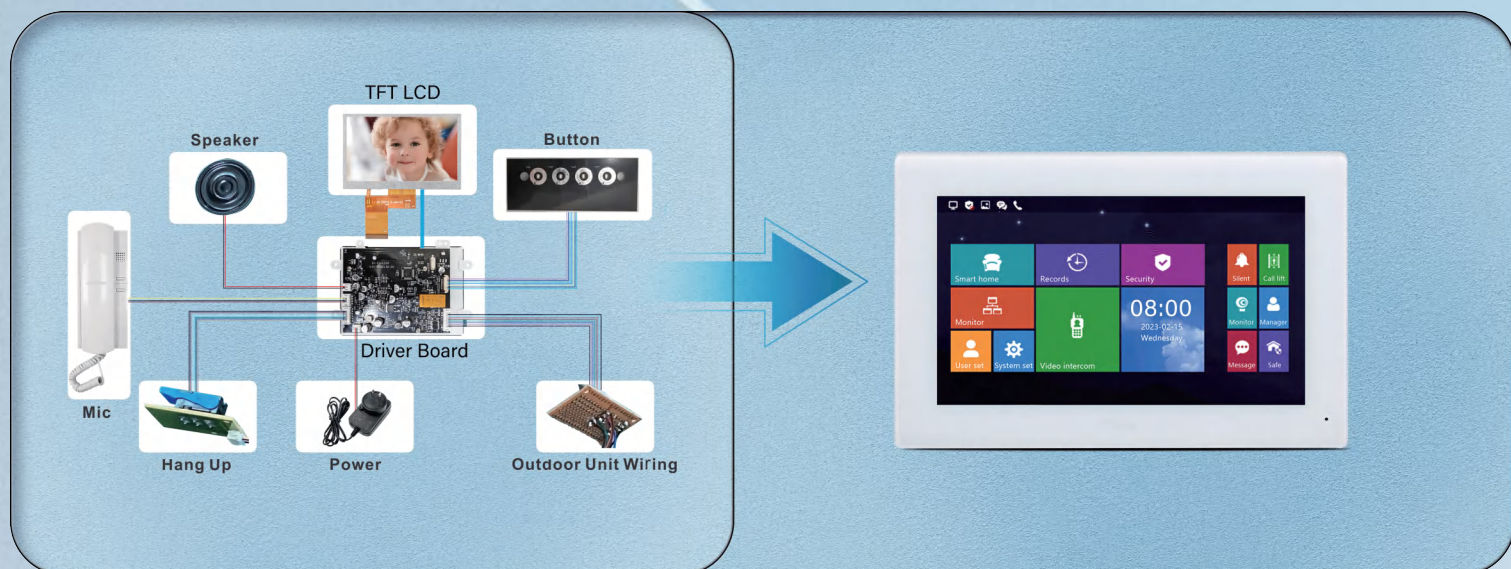
**Multi Language**



# TFT LCD + Driver Board+Camera Module +Other Semi Parts SKD Solutions for You

We Support SKD Solutions

Assembly Customization



# Specifications and Parameters

## SPECIFICATIONS

System	Linux System	Network Transmission	TCP/IP Protocol
Connection	RJ45 Network Cable CAT5 / CAT6	Installation	Wall Mounted
Net Weight	1.3 kg	App	Tuya, Smart Life

## INDOOR MONITOR

Model	IP-M72T-TUYA
Display Screen	7 inch TFT LCD
Resolution	1024*600 Pixels
Material	ABS Plastic + Acrylic Panel +Full Touchscreen
Power	Non-Standard POE Switch / Power Adapter (DC12-24V)
Working Voltage	DC 12-24V
Working Current	≤500mA
Working Temperature	-10℃~+50℃
Working Humidity	10%~90%
Storage Temperature	-40℃~70℃
Language	Chinese/English/Customize
Dimensions	190(W)*122(H)*17(D) mm
Color	Black / White / Customize
Installation	Wall mounted

## OUTDOOR STATION

Model	IP-P901
Definition	1080P 2 Million Pixels
Color	White+Silver
Material	Aluminum Alloy +Acrylic Panel+ Press Button
Power	Non-Standard POE Switch / Power (DC12- 15V)From Monitor
Working Voltage	DC 12-15V
Working Static Current	<200mA
Working Dynamic Current	<250mA
Working Humidity	10%~90%
Working Temperature	-30℃~ +60℃
Maximum Power Consumption	< 5W
Dimensions	165(H)*90(W)*28(D)mm
Installation	Wall-mounted or Embedded



Warranty and Premise

- (1) Free renew the problem products within one year warranty since the delivery date from factory.
- (2) The premise is non-man-made damage, non-natural disaster, non-water flooding earthquake, typhoon, natural disaster and other force majeure factors.

Renew Shipping Fees

- (1) If you need faster delivery and replace the new products very soon, the customers need undertake the air express fees by themselves
- (2) In less urgent cases, the renew products can be sent back with your next order, which saves international shipping costs.

Delivery

- (1) Villa Kit : 3 ~ 7 days
- (2) Apartment: 7 ~10 days
- (3) Customize: 15~ 45 days

Shipping

- (1) Express DHL / UPS / Fedex ,etc.
- (2) DDP by Air / DDP by Sea
- (3) Send to your shipping agents
- (4) Send to your other suppliers

FAQ

No.	Malfunction	Reason	Solution
1	Outdoor station can't call indoor monitor?	1.Indoor Monitor got reset 2.Network cable quality or different standard	"1.In ""Sys Set""-""Address"" ,set address as ""010101010101 2.Use a 568B standard and good quality network cable"
2	"Before installation , it was working well. But after installation, it can not be called?"	1.Network cable quality 2.Insufficient power supply voltage	"1.Use a good quality network cable 2.Use a power adapter with output DC18V-24V,if the network cable is over 40 meters"
3	"When visitor was calling, only one monitor is working"	1.Address is the same	"1.For example, the address of one monitor is ""010101010101"" , and the address of another should be ""010101010102"" . If there are more screens, then the address should be ""010101010103"" , ""010101010104"" and so on."
4	Why can't open the lock?	"1.Don't use a power supply controller 2. Connect the wrong wire"	"1.Use a power supply controller to power and control the lock 2. Please get and check the wiring diagram or video from technical support"

After Sale Service

- (1) 24 Hours 7 Days Online Service
- (2) Mobile: +86 133 6006 7973
- (3) Email: after-sale@skynex-doorbell.com

Scan below QR code to contact the after-sales technicians



(WhatsApp)



(WeChat)

Shenzhen office: 6 / F Sanhe Science and Technology Park No. 1 Longhua Shenzhen  
Dongguan Factory: Building A Yongsheng Science and Technolog Industrial Park Tangxia Dongguan