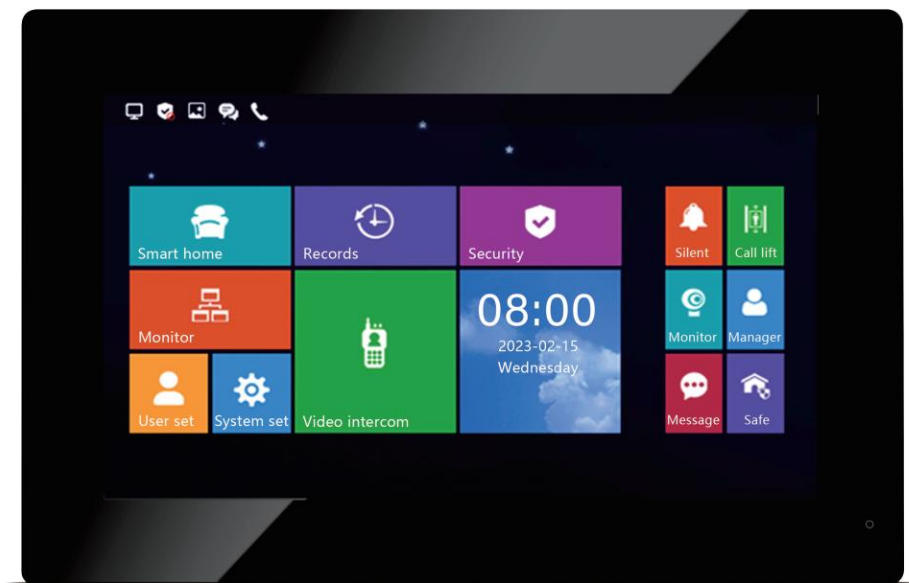


# Doorbell

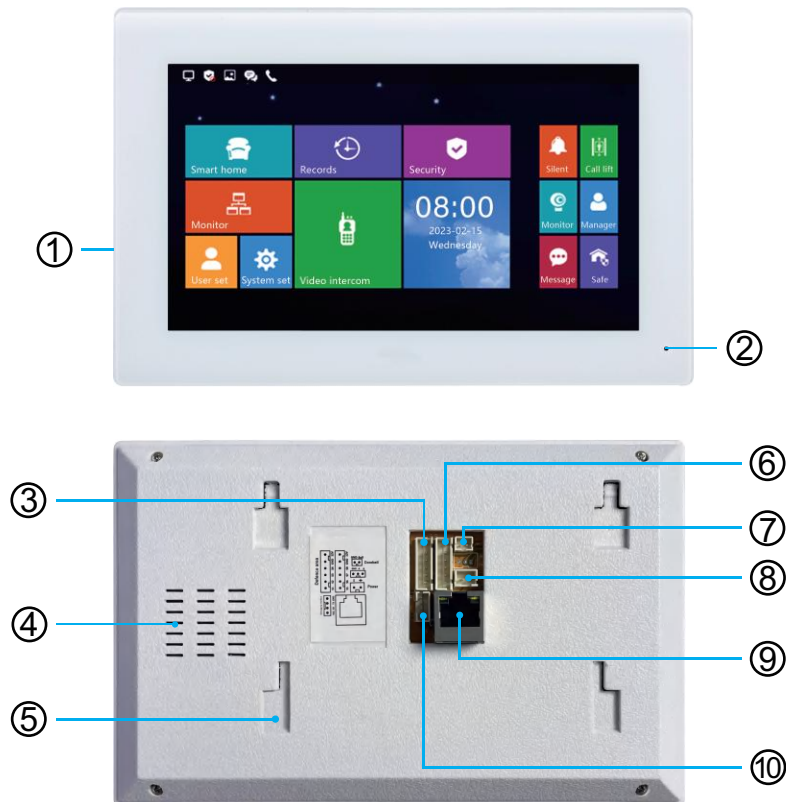
## Instruction Manual V3.0



Before using this product, read the Quick Guide carefully and save it for future referenceV3.0.

# Indoor Monitor (Network Cable)

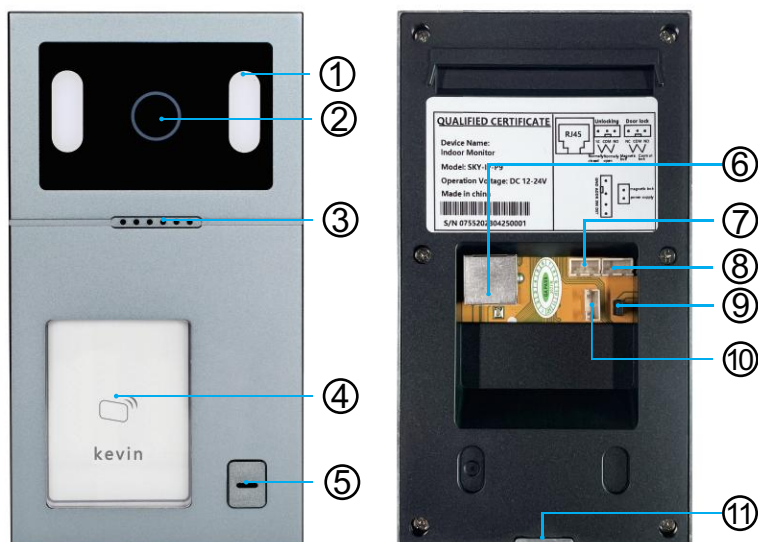
## Indoor Monitor



- ① Screen
- ② Microphone
- ③ Connect detector: S1 S2 S3 S4 GND 12V
- ④ Speaker
- ⑤ Bracket slot
- ⑥ Connect detector: S5 S6 S7 S8 GND 12V
- ⑦ Bell GND: Connect doorbell
- ⑧ V+ V-: Connect Power Adapter
- ⑨ RJ45 Interface
- ⑩ Debug Software: VCC RX TX GND

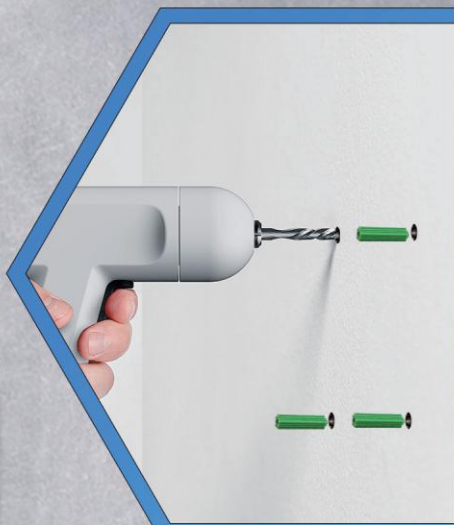
# Call Panel (Network Cable)

## Outdoor Station



- ① Light Compensation
- ② HD Camera
- ③ Speaker
- ④ IC/ID Card Reader
- ⑤ Call Button
- ⑥ RJ 45
- ⑦ NC COM NO
- ⑧ NC GND NO
- ⑨ Magnetic lock power supply
- ⑩ GND ADDR SW DET
- ⑪ Screw Hole

# Outdoor Station Installation



## Drilling

Drill screw holes in the location of the wall mounting plate



## Fix wall mounting plate

Fix the wall mounting plate to the wall with 2 screws

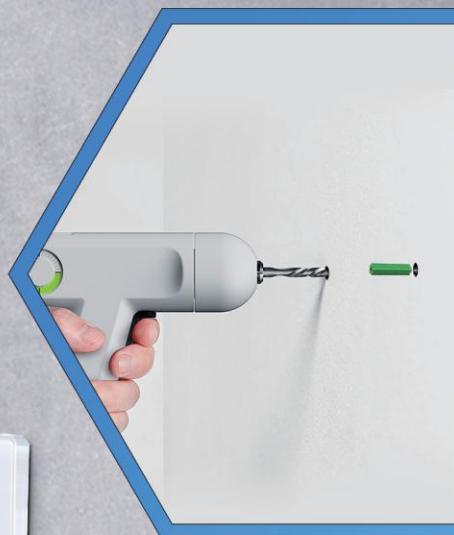


## Install outdoor station

Insert the outdoor station to the plate and fasten it with a screw

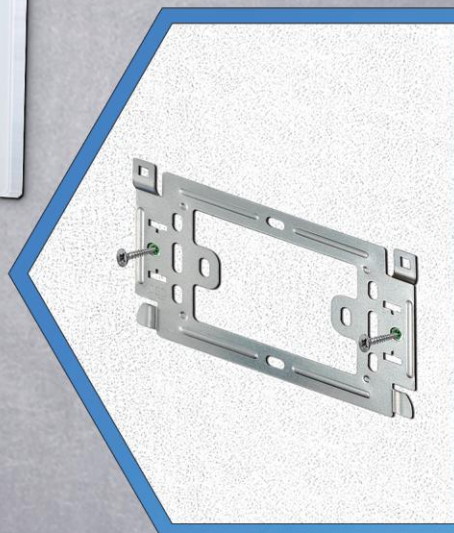


# Indoor Monitor Installation



## Drilling

In the reserved hole on the wall, drill screw holes in the location of the wall mounting plate



## Fix wall mounting plate

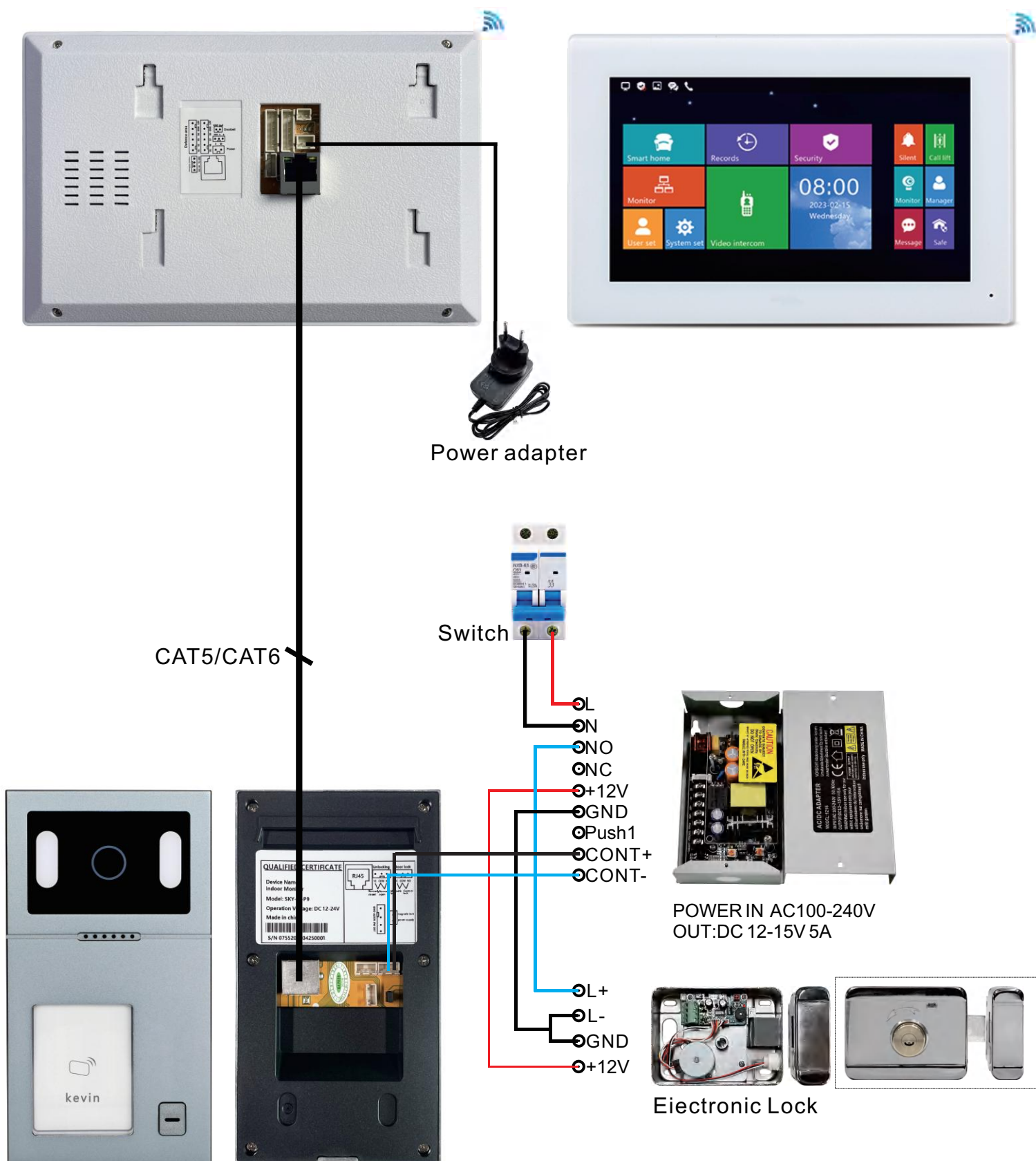
Fix the wall mounting plate to the wall with 2 screws



## Hook indoor monitor

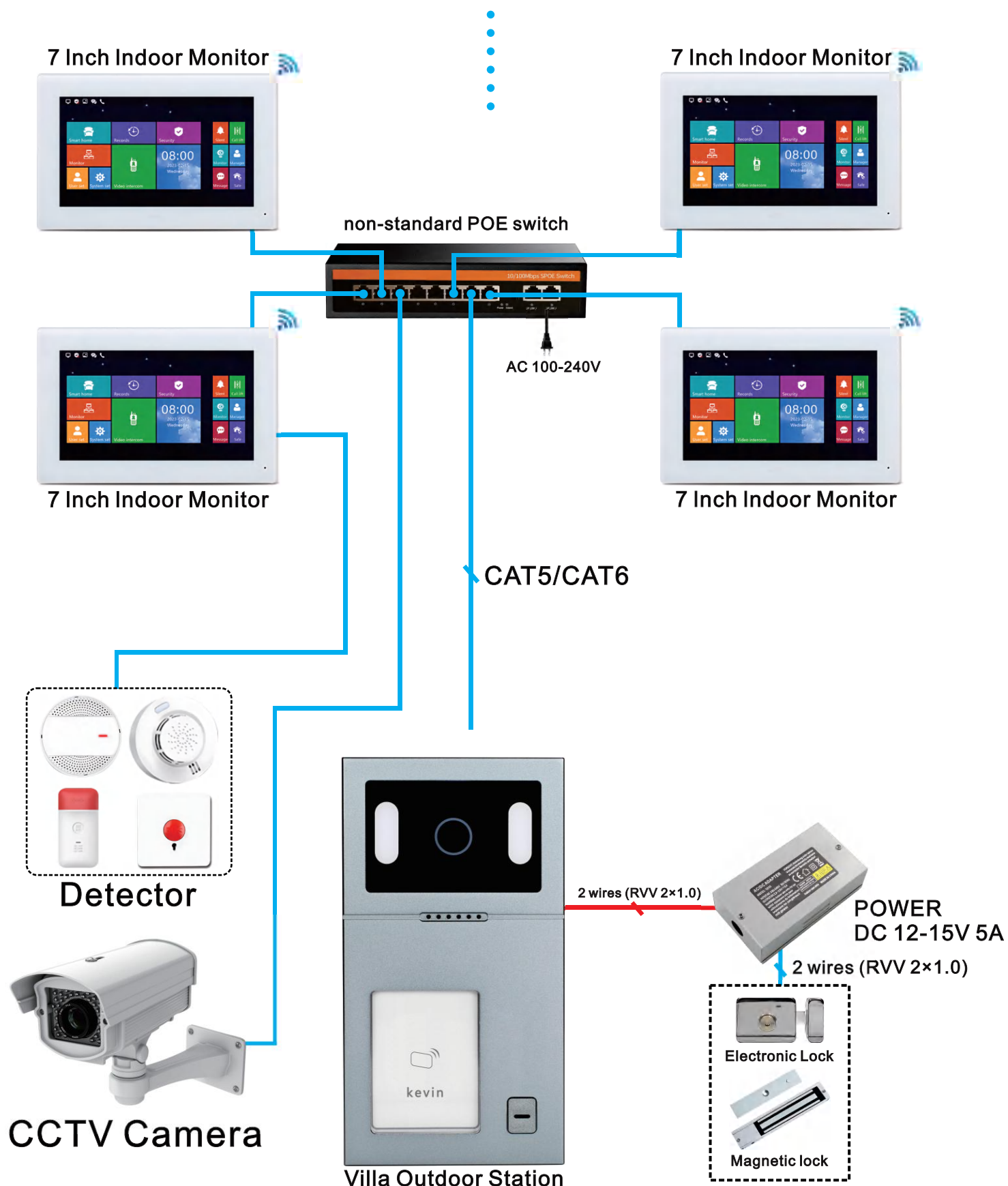
Hook the indoor monitor to the wall mounting plate tightly

# Wiring Diagram(1 to 1) (Network Cable)



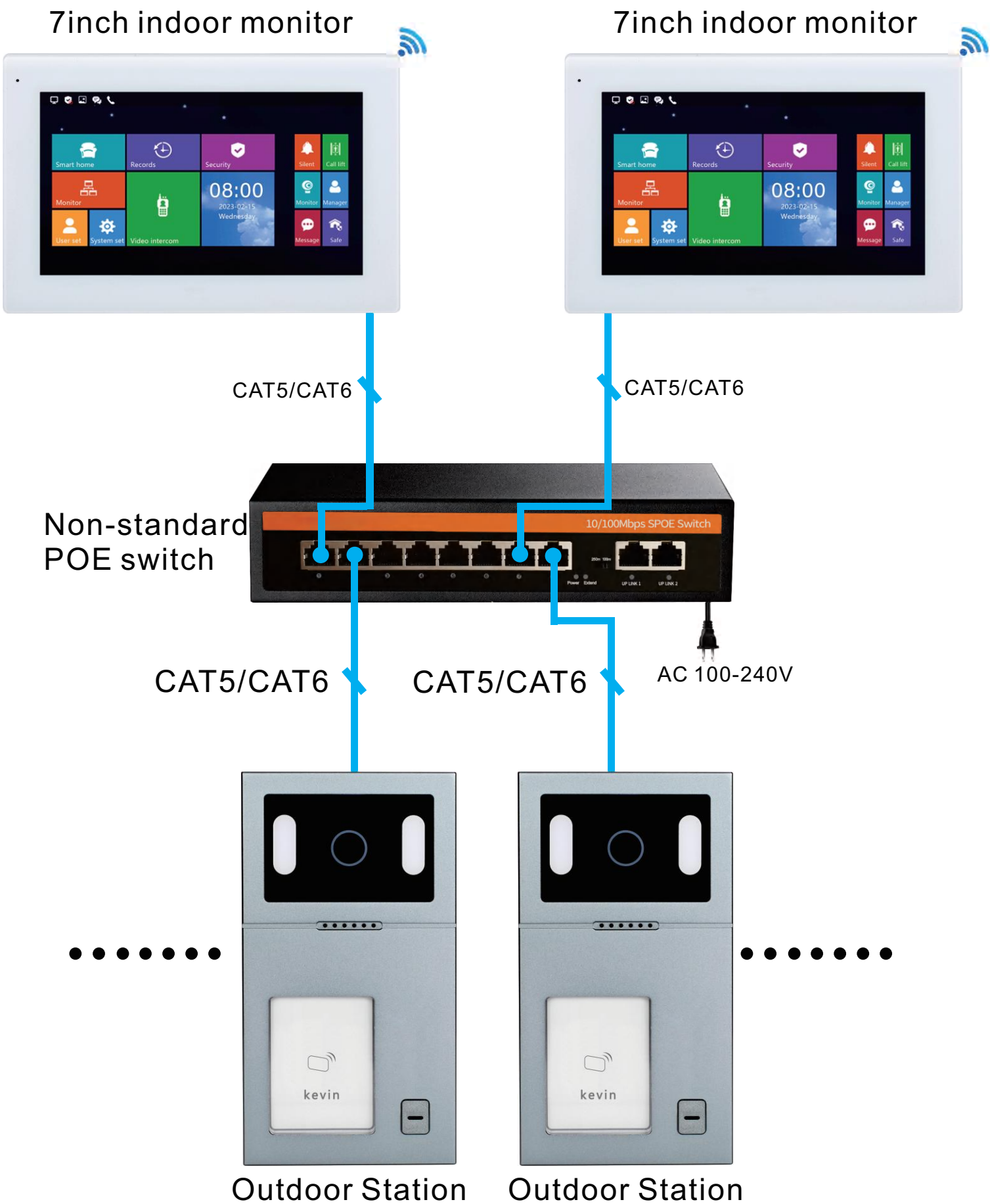
# IP System -Villa 1 to 99 Diagram

Up to 99 pcs indoor monitor





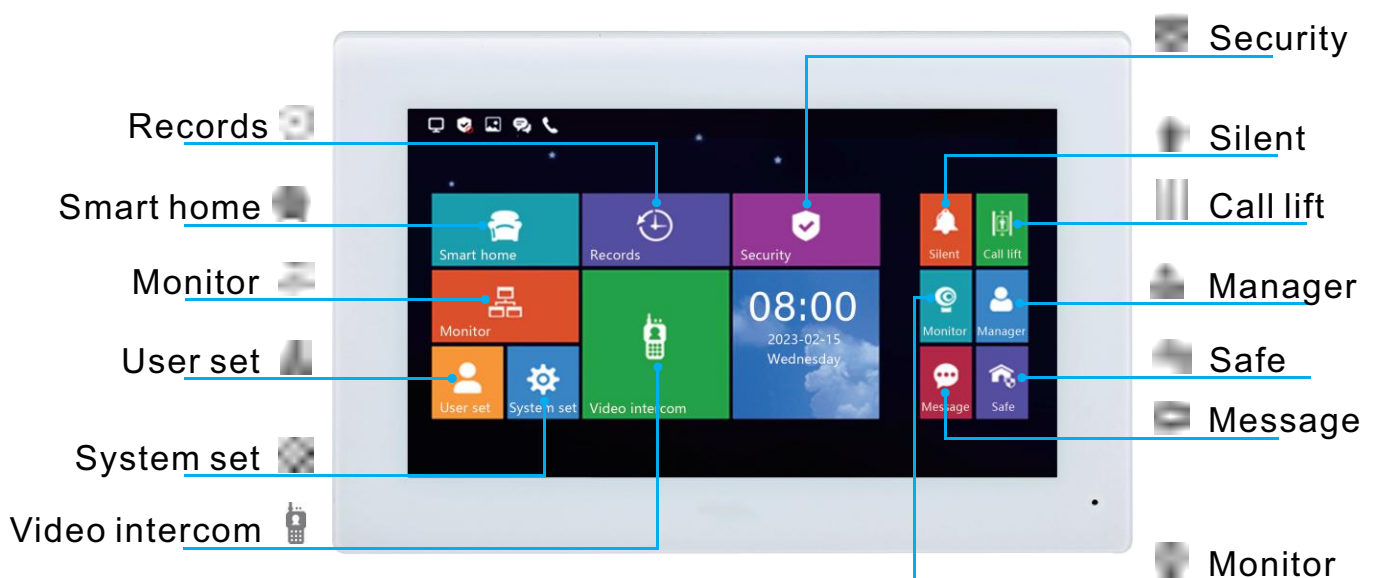
# IP System- Villa 99 to 99 Diagram



# Features

1. IP 7" color capacitive full touch screen Tuya / Smart life app indoor monitor
2. View wide angle 110°, night vision, IP 65 waterproof outdoor station
3. Video call, talk, intercom , room to room call , unlock
4. Connect with electric lock , keys to unlock , Mobile Tuya remote control visual unlock
5. Support connect CCTV Camera by Onvif protocol
6. Monitoring & Snapshot photo when visitor calls
7. Support 8 photos, 8 leave messages, 10 call records.  
Not support SD memory card
8. Support multiple call panels, multiple indoor monitors by POE switch
9. Open 1 door

## 7 Inch Full Touchscreen IP Indoor Monitor Interface Display





# Add WIFI Tuya APP Connected with Mobile Phone Setting

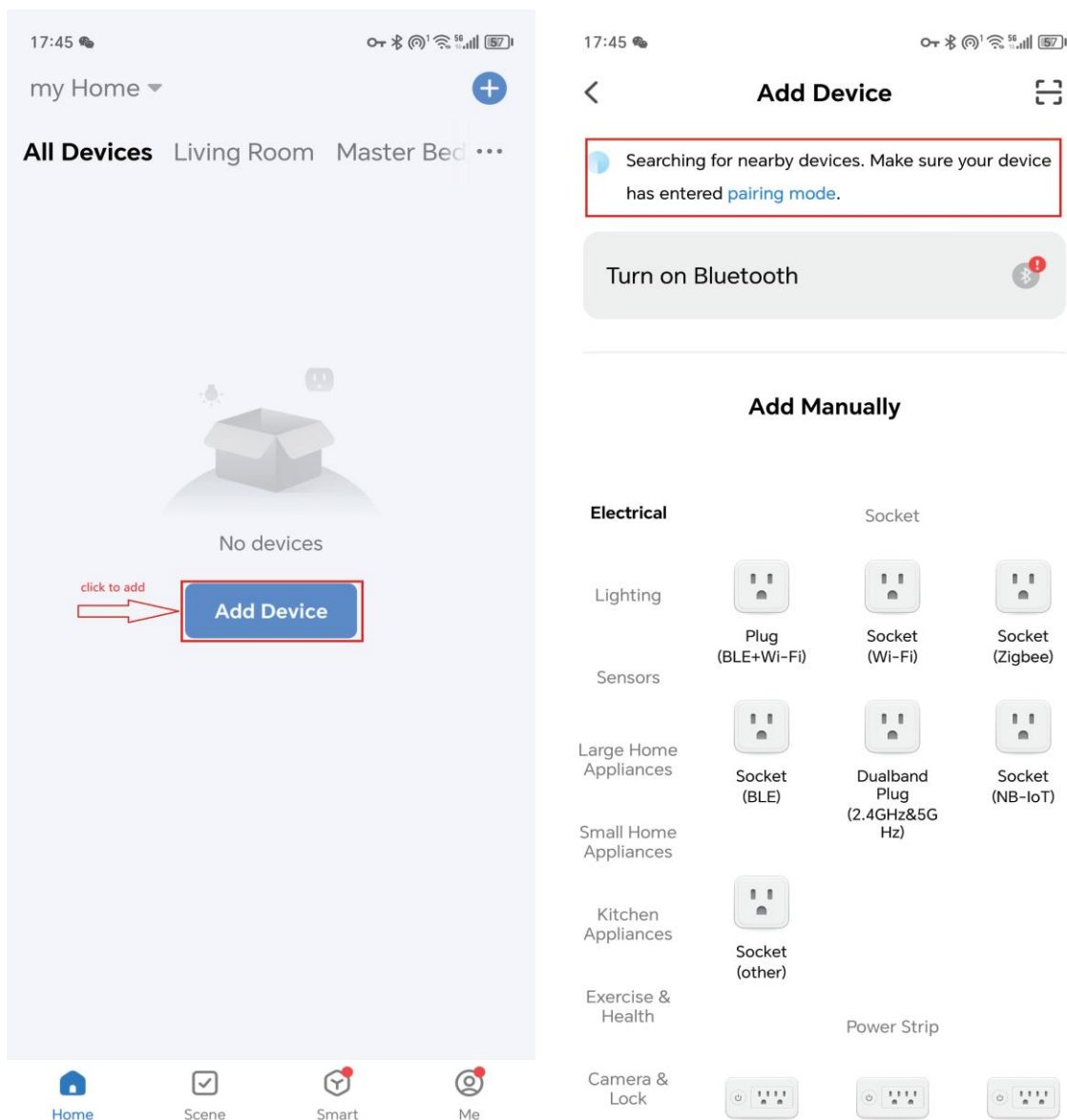
## Steps 1

The mobile phone should connect to the same WiFi as the monitor Then download "Tuya Smart" or "Smart Life-Smart Living" from Google Play or APP Store. And register and login in your account.



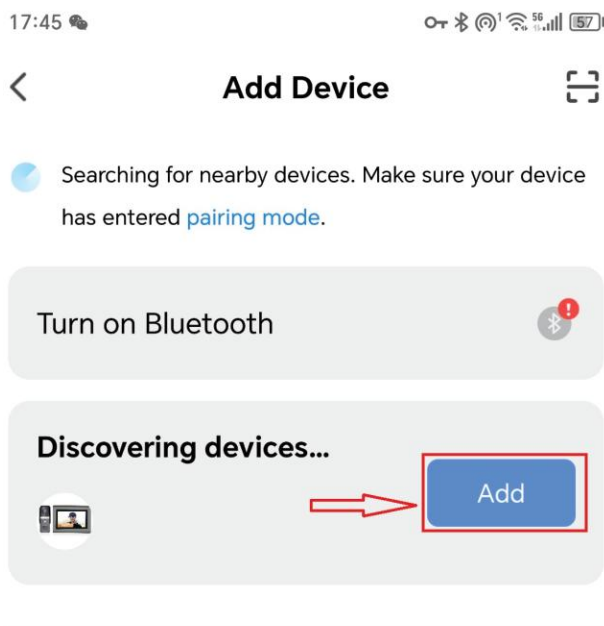
## Steps 2

Open the software and click "Add Device", and it will search and pair device.

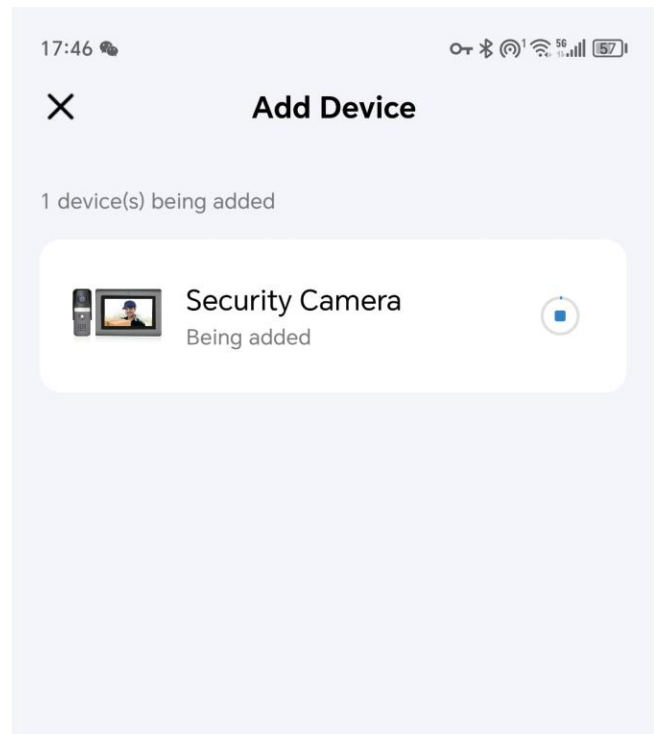


### Steps 3

When the WiFi monitor device is found, press "Add". And the device is being added.

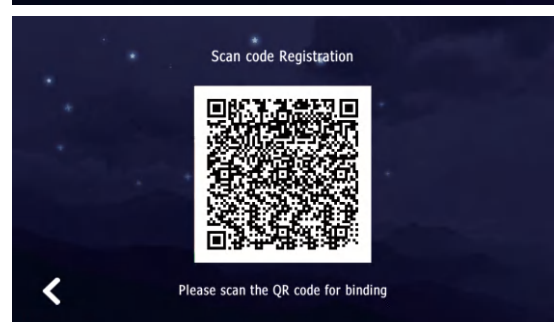
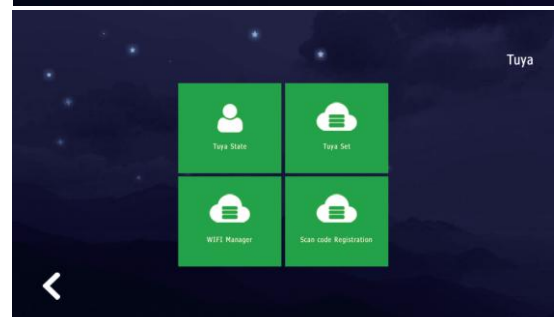
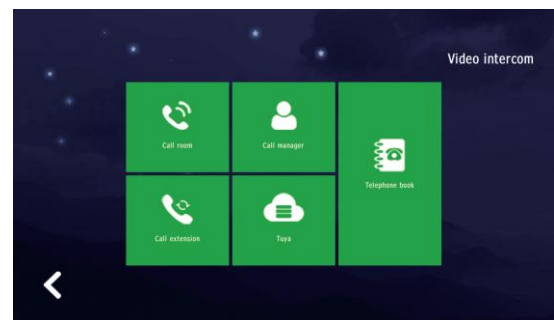
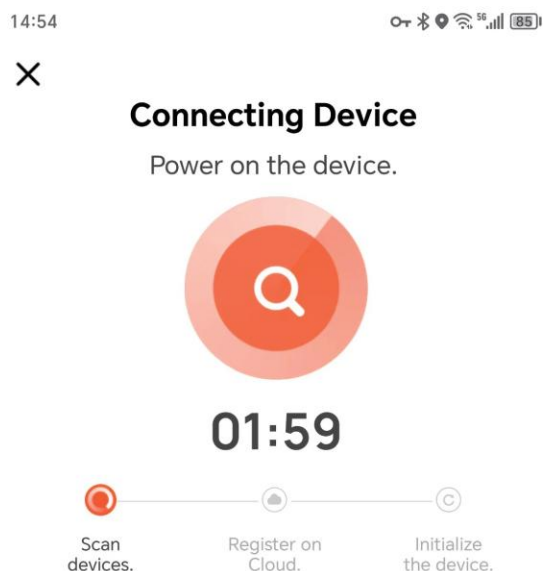
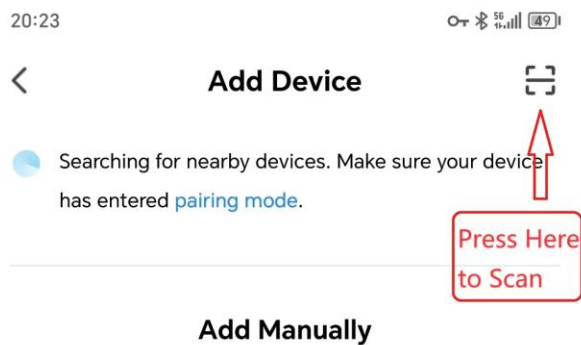


**Add Manually**



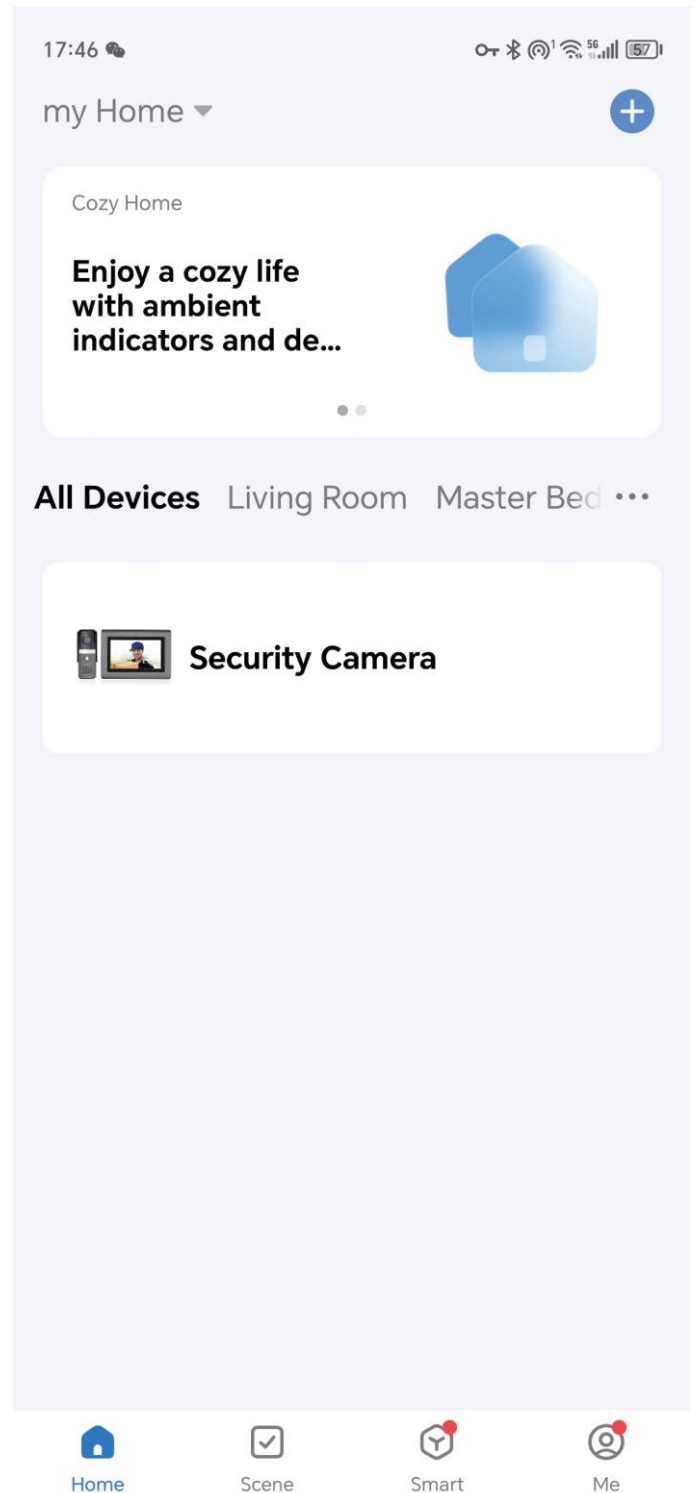
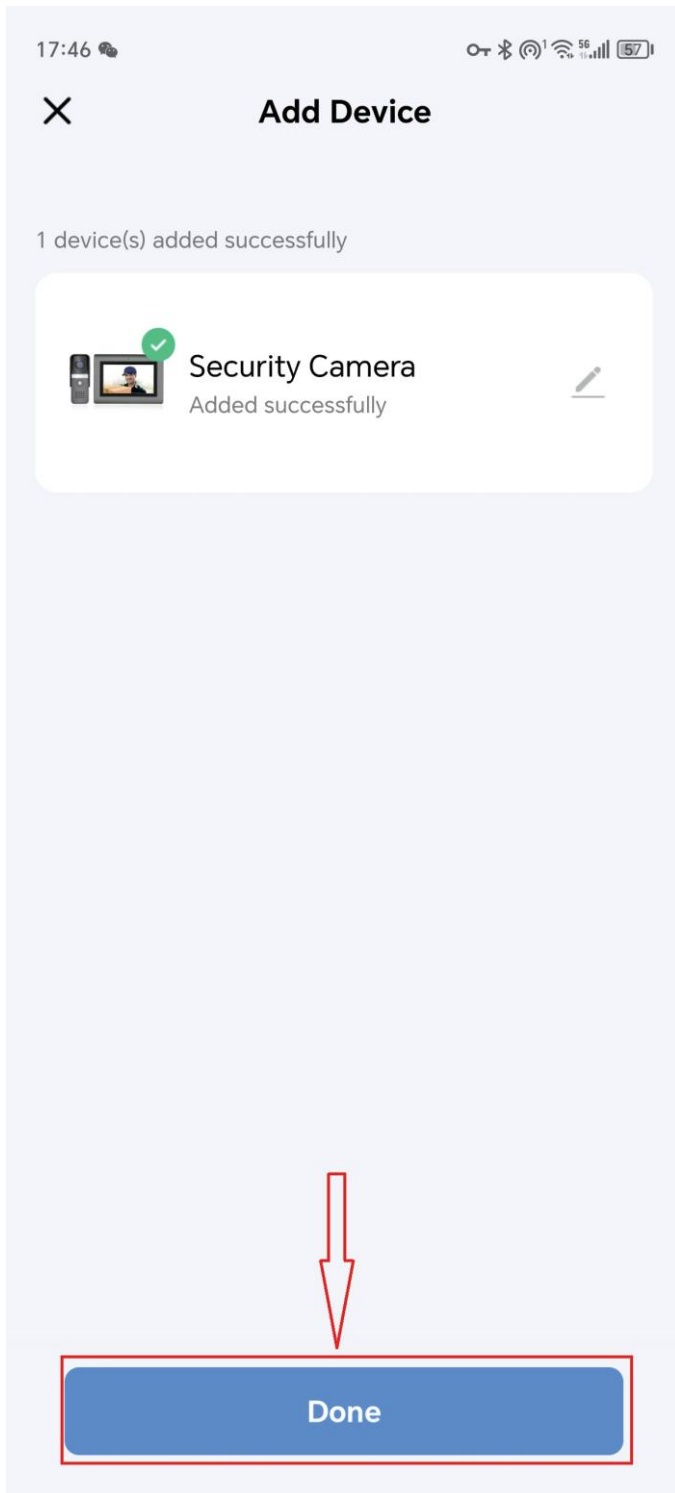
### Steps 4

In Intercom-Tuya-Scan code registration scan the QR code and wait for adding.



## Steps 5

Waiting for it's done, then press "Done". Finally, device is added successfully.



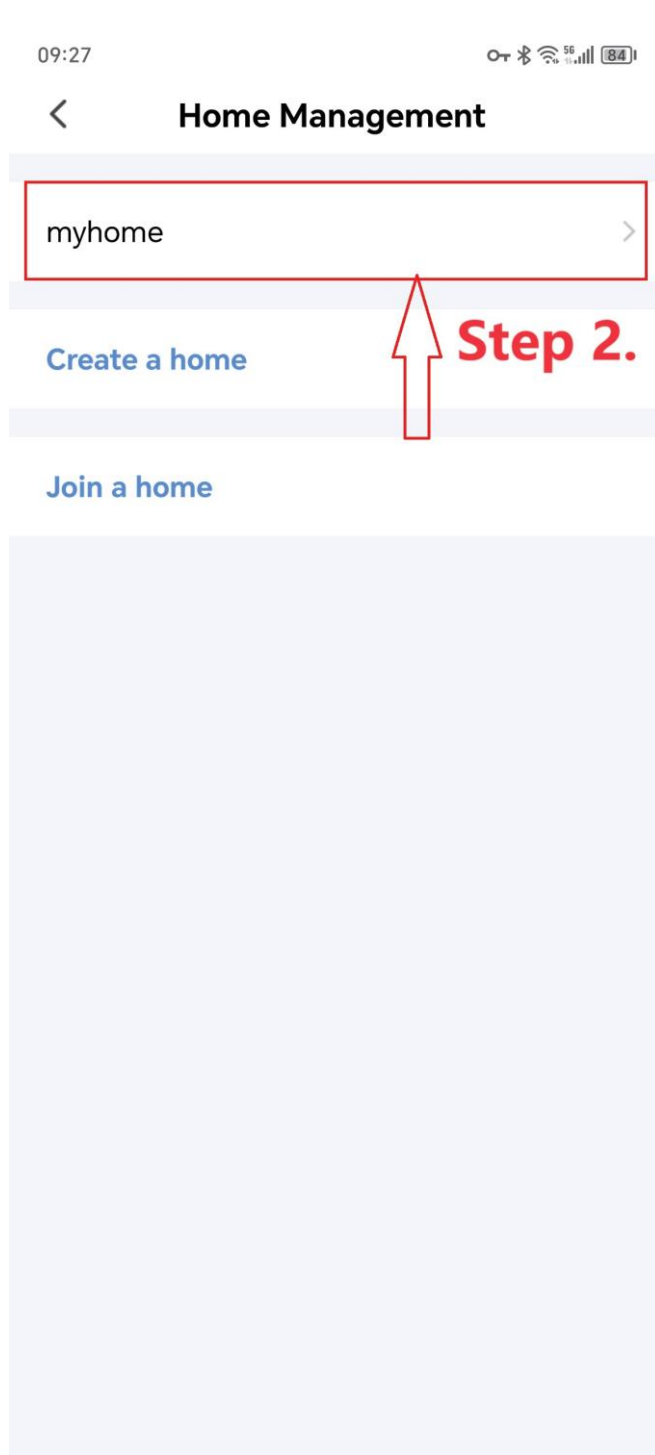
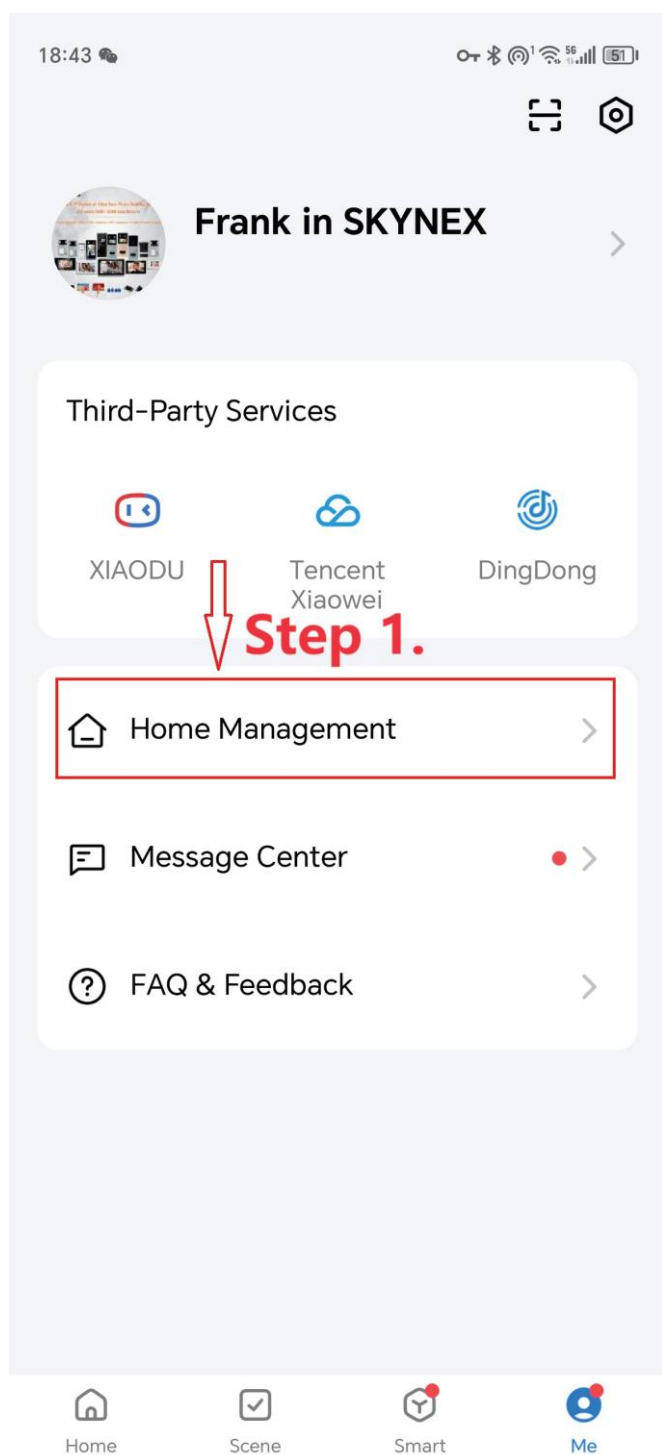


# How to Share to Other Users

## Steps 1

1. Log in your account on the app on other family members' phones.
2. Another way is to add their accounts on your APP (Up to 20 members).

Found "Me"---enter the "Home Management".



## Steps 2

You need to "Complete Home Information" if you don't use Tuya or Smart Life before. Just name this family group like "myhome". And in "Home Settings", add family members.

17:34:35

Cancel **Complete Home Information** Save

Home Name \* Enter **For example: myhome**

Location Set

Rooms:

- Living Room ☒
- Master Bedroom ☒
- Second Bedroom ☒
- Dining Room ☒
- Kitchen ☒
- Study Room ☒

[Add Room](#)

**Step 3**

09:20

< **Home Settings**


Home Name myhome >

Room Management 6 Room(s) >

Location To Be Set >

Manage Permissions >

Home Member

 Frank in SKYNEX wx-o9u\_svwRRwu0f... Home Owner >

**Add Member** **Step 4.**

Delete Home

### Steps 3

Input the account and name you want to share, and click Save to finish the sharing.

09:25 Remember to Save 5G 84

Cancel **Add Member** **Save**

**Name of member to be added**

|      |      |
|------|------|
| Name | Juan |
|------|------|

|        |       |   |
|--------|-------|---|
| Region | China | > |
|--------|-------|---|

|         |             |
|---------|-------------|
| Account | 18450050175 |
|---------|-------------|

**Member registration**  
**account(telephone or email)**

Only after accepting the invitation will the account owner become a family member and be able to use relevant functions.

|             |               |   |
|-------------|---------------|---|
| Family Role | Common Member | > |
|-------------|---------------|---|

09:24 5G 84

< **Home Settings**


|           |        |   |
|-----------|--------|---|
| Home Name | myhome | > |
|-----------|--------|---|


|                 |           |   |
|-----------------|-----------|---|
| Room Management | 6 Room(s) | > |
|-----------------|-----------|---|

|          |           |   |
|----------|-----------|---|
| Location | To Be Set | > |
|----------|-----------|---|

|                    |   |
|--------------------|---|
| Manage Permissions | > |
|--------------------|---|

Home Member

|   |   |            |   |
|---|---|------------|---|
|  | <b>Frank in SKYNEX</b><br>wx-o9u_svvRRwu0f... | Home Owner | > |
|---|---|------------|---|

|   |                                   |               |   |
|---|-----------------------------------|---------------|---|
|  | <b>Juan</b><br>Waiting to join... | Common Member | > |
|---|-----------------------------------|---------------|---|

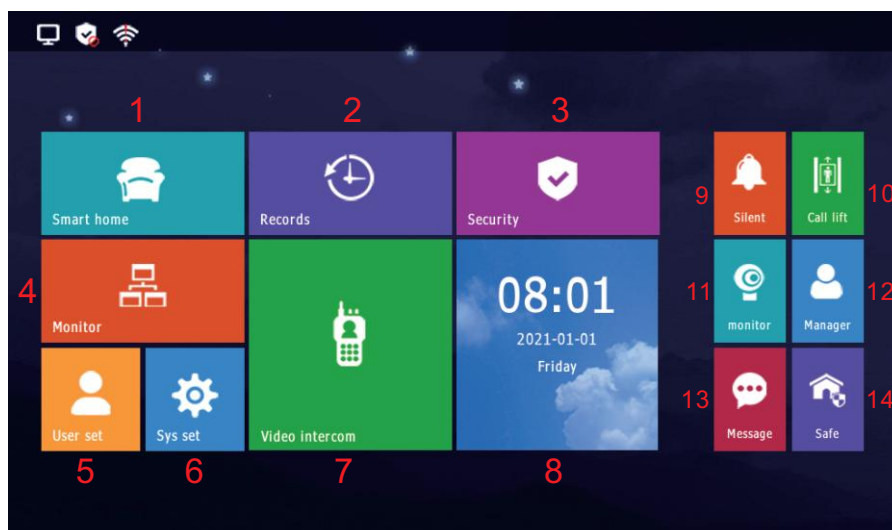
**Add Member**

**Delete Home**



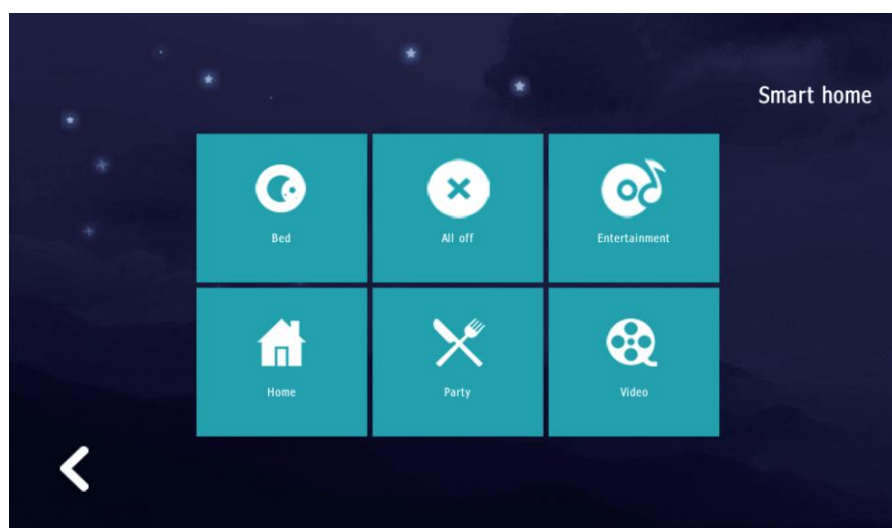
# How to Add or Delete IC/ID Cards?

## 1.Homepage



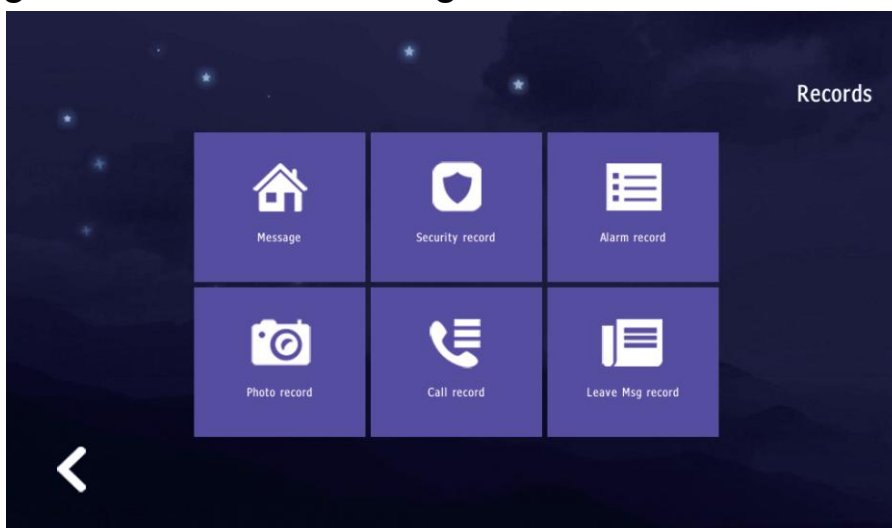
### (1) Smart home

6 scene modes, need to pay extra for customization.



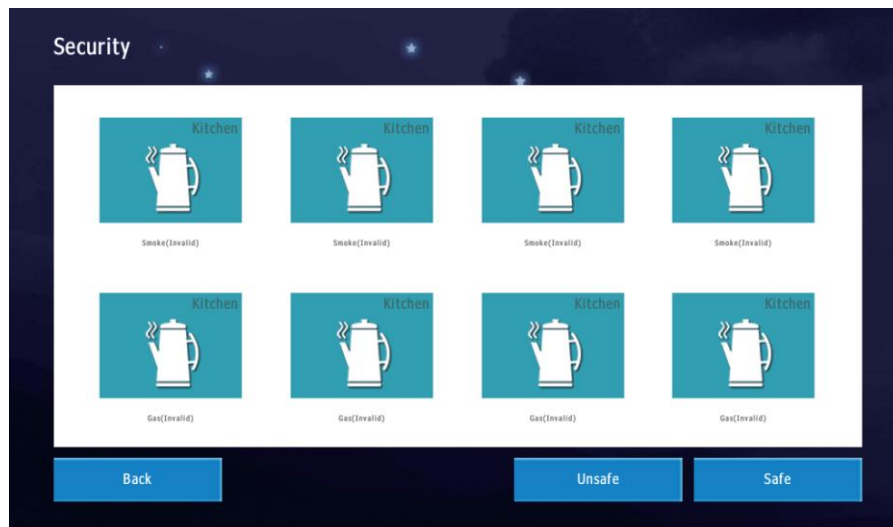
### (2) Records

Security records, alarm records, photos, call records, messages and voice messages.



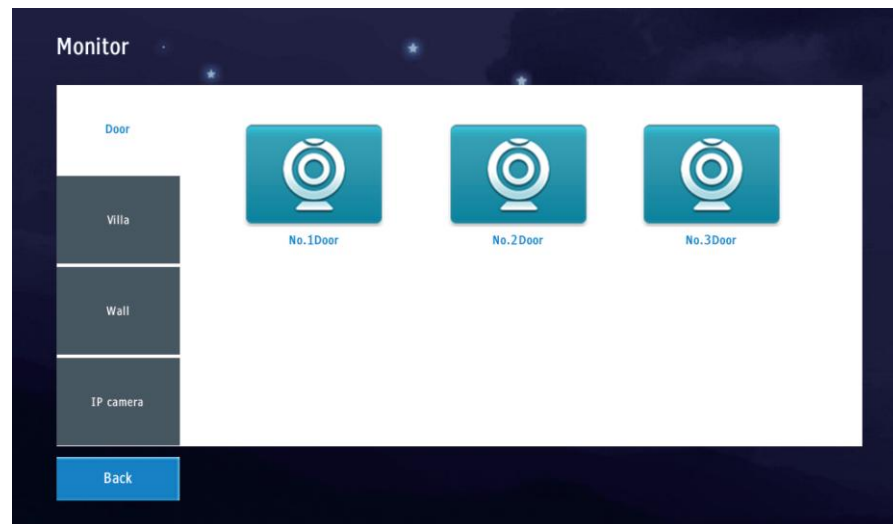
### (3) Security

Enable or disable alarms and detectors.(disable password: “123456”)



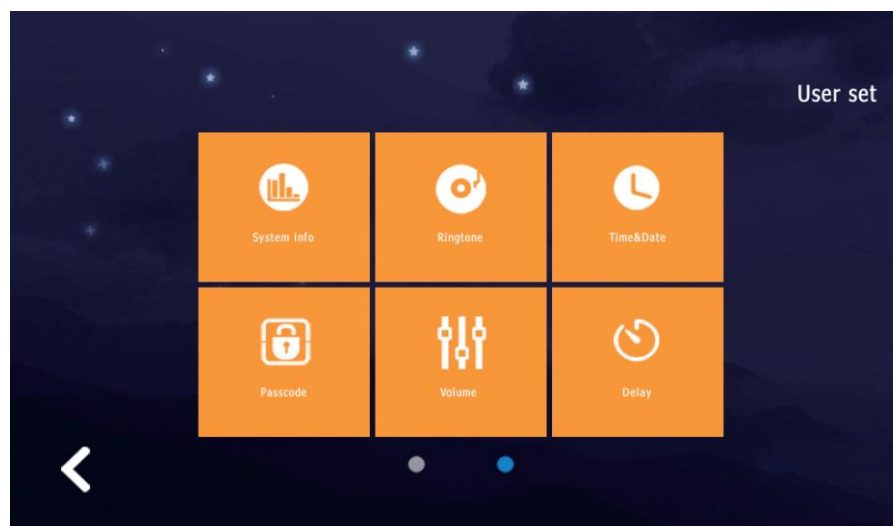
### (4) Monitor

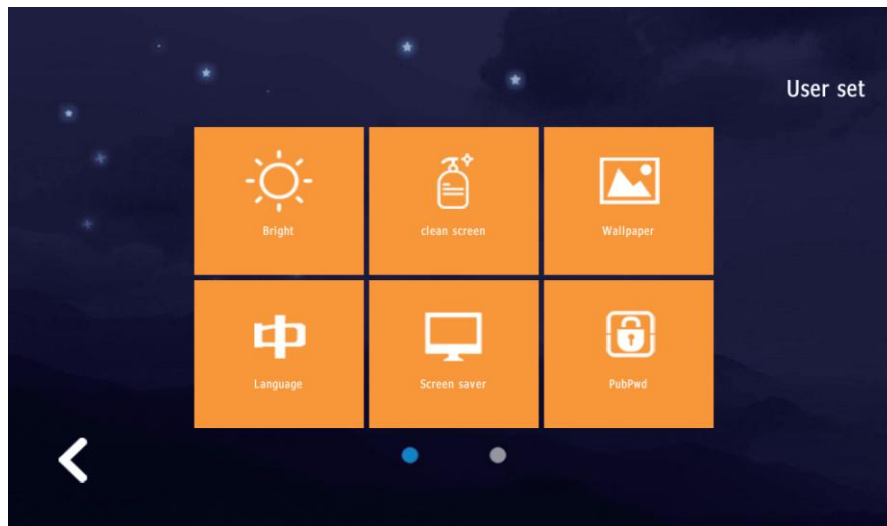
Monitor the camera of outdoor station or IP camera.



### (5) User set

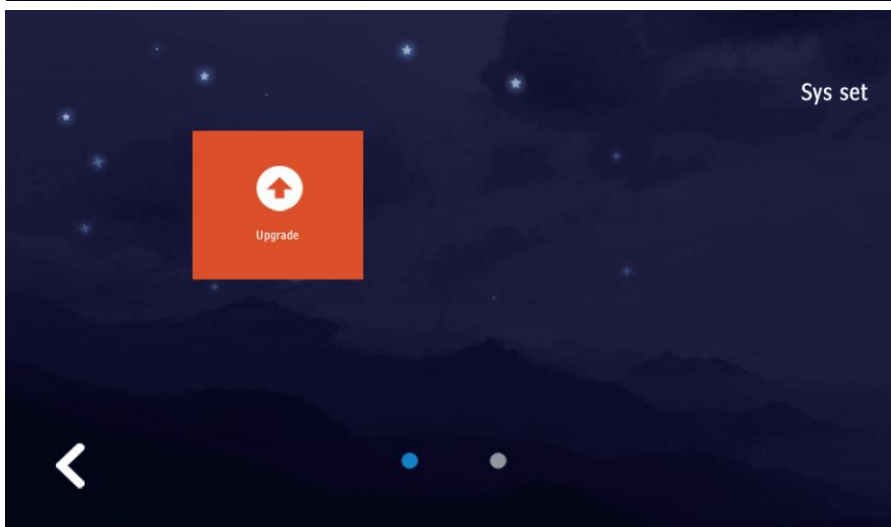
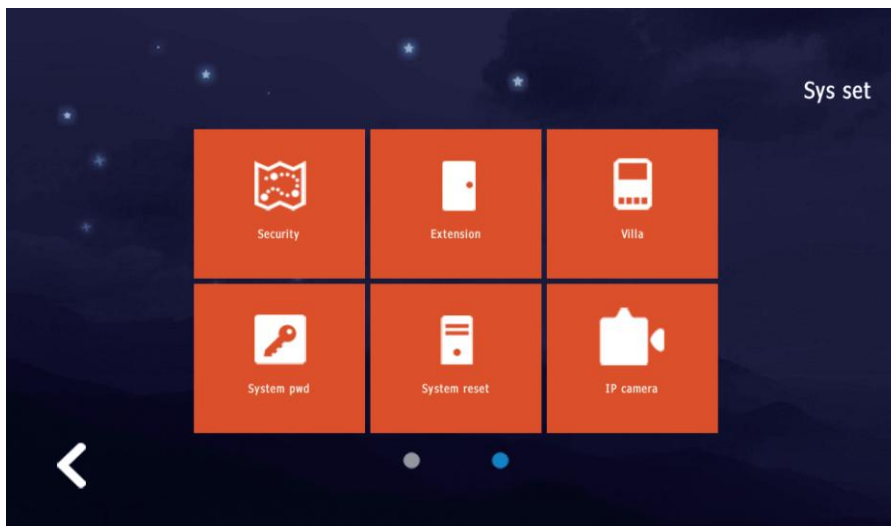
System information viewing, ringtone settings, date and time settings, personal unlock password and disarm password, volume settings, delay settings, brightness settings, wallpaper settings, language settings, screen saver settings, etc.





## (6) Sys set

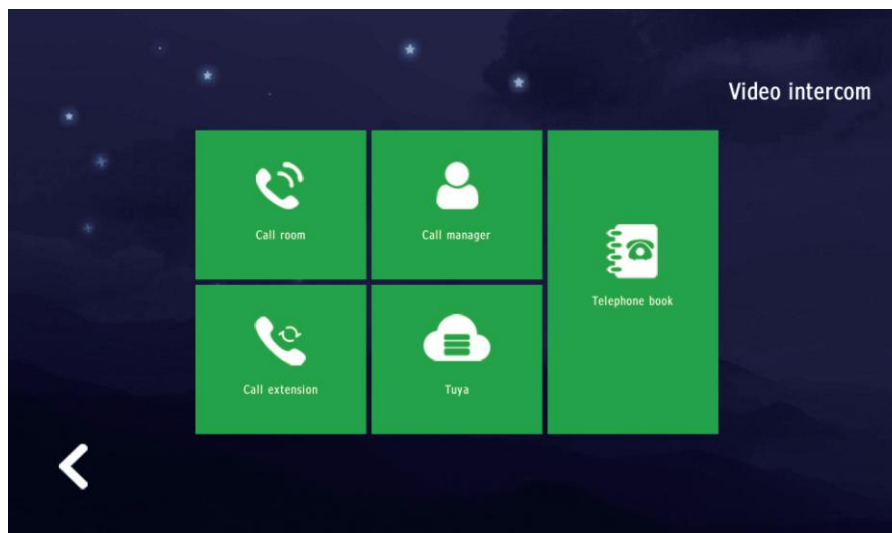
Detectors settings, extension address settings, add or delete IC/ID card, change system password, system reset, IP camera adding and delete.



## (7) Video intercom

Call to other apartment, call to management center, call to other monitors in the same apartment, Tuya management, telephone book.





(8) Date&Time

Show time and date.

(9) Silent

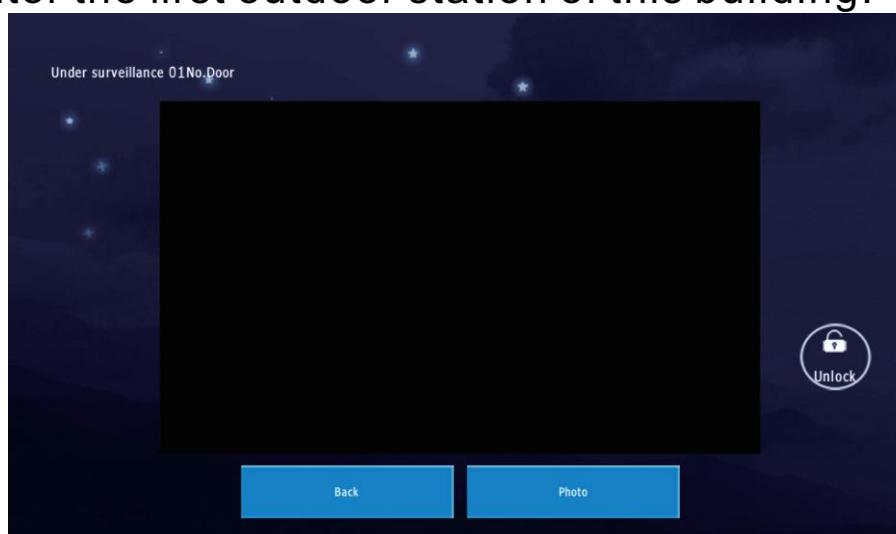
Turn silent mode on or off.

(10) Call lift

Requires outdoor station support, used with elevator control linkage board and elevator control board.

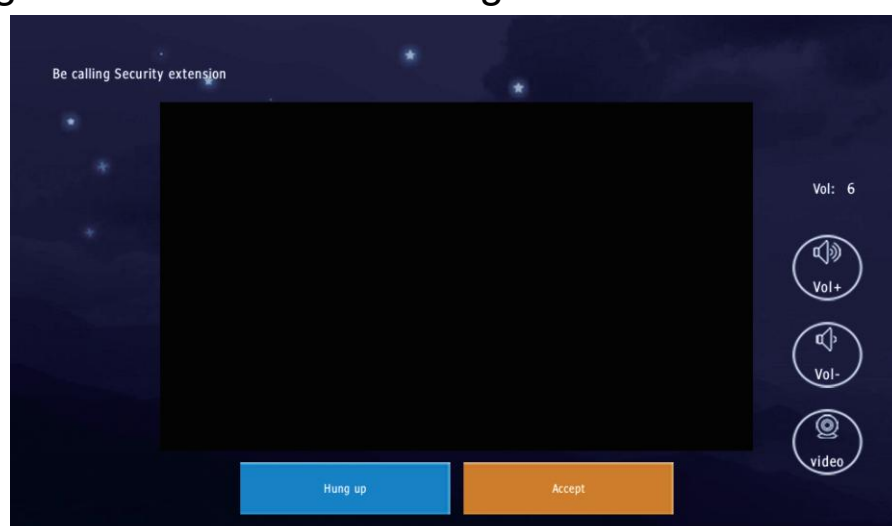
(11) Monitor

Monitor the first outdoor station of this building.



(12) Manager

Call guard station and management center.



### (13) Message

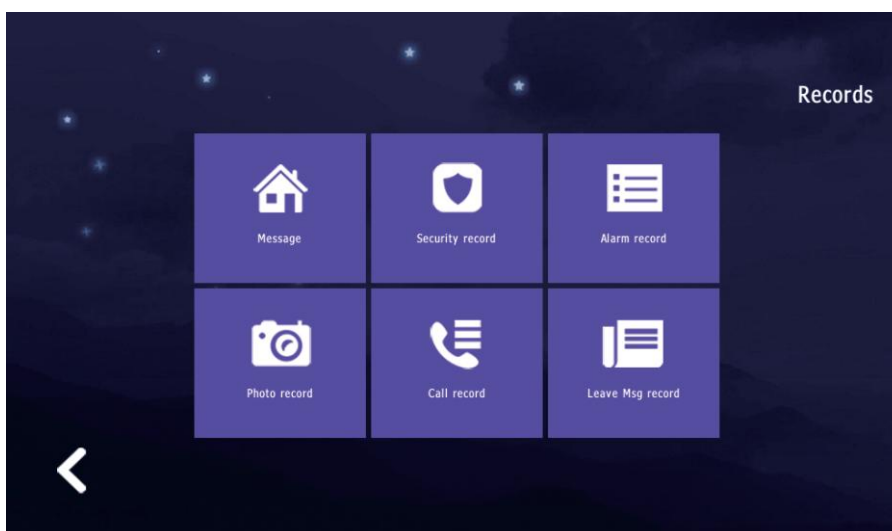
Announcements or private messages from the management center.



### (14) Safe

Enable the alarms and detectors.

## 2.Records



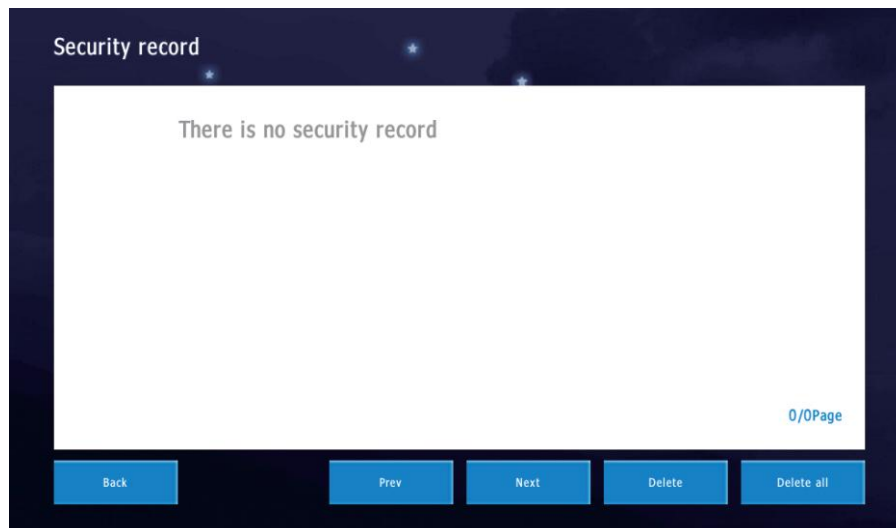
### (1) Message

Public and private message from management.



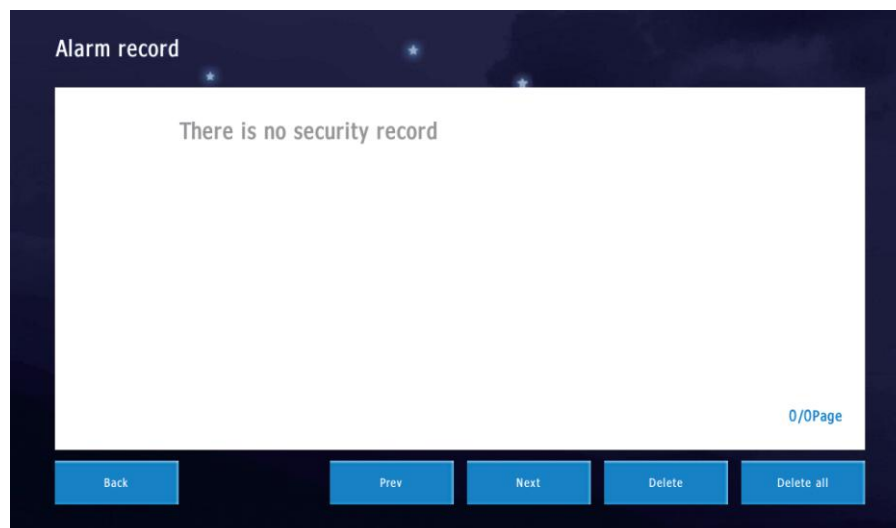
## (2) Security record

Enable and disable alarms records.



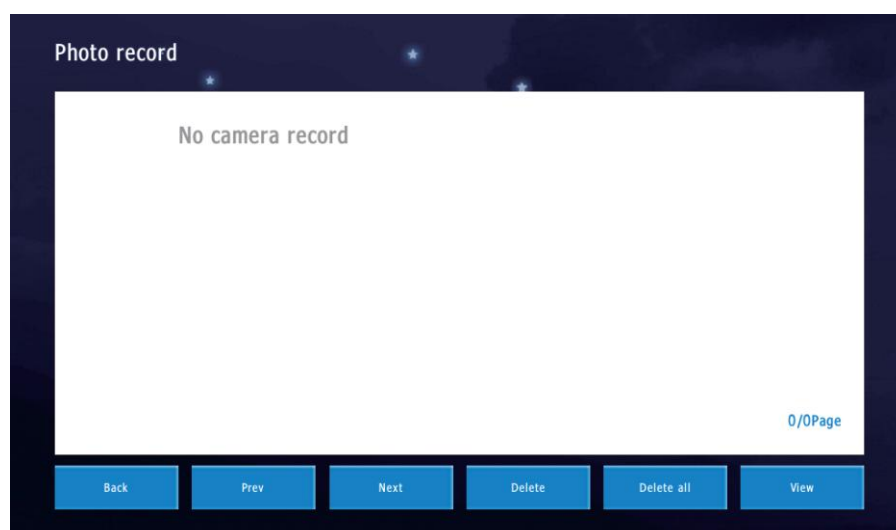
## (3) Alarm record

Record of detector alarms.



## (4) Photo record

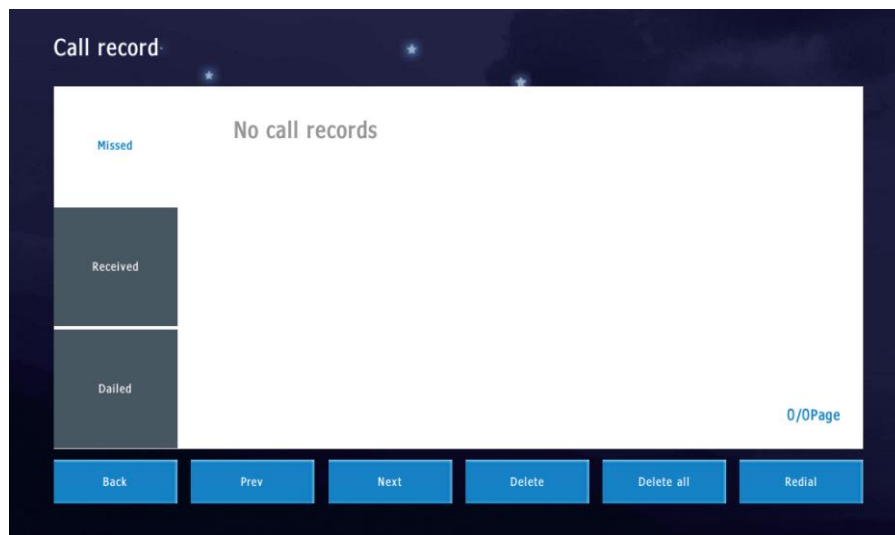
Photos taken during monitoring. Press view to check the photo.



## (5) Call record

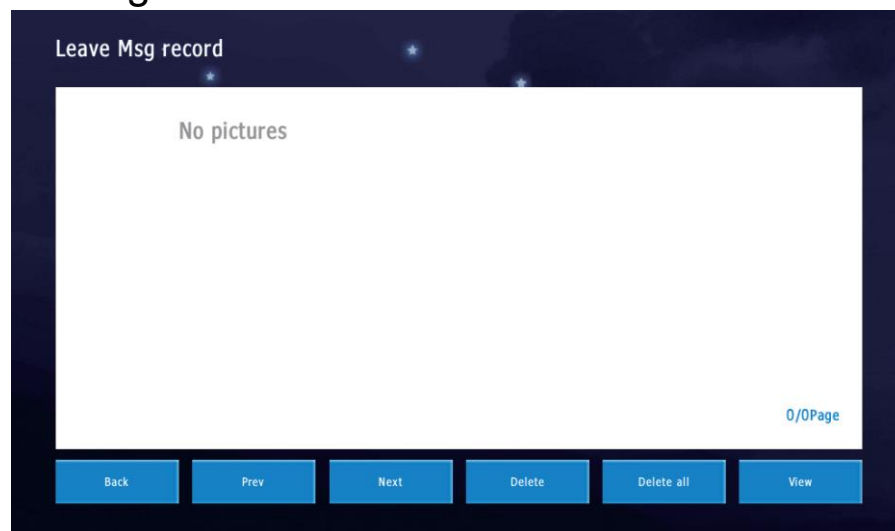
Missed, Received, Dialed records.



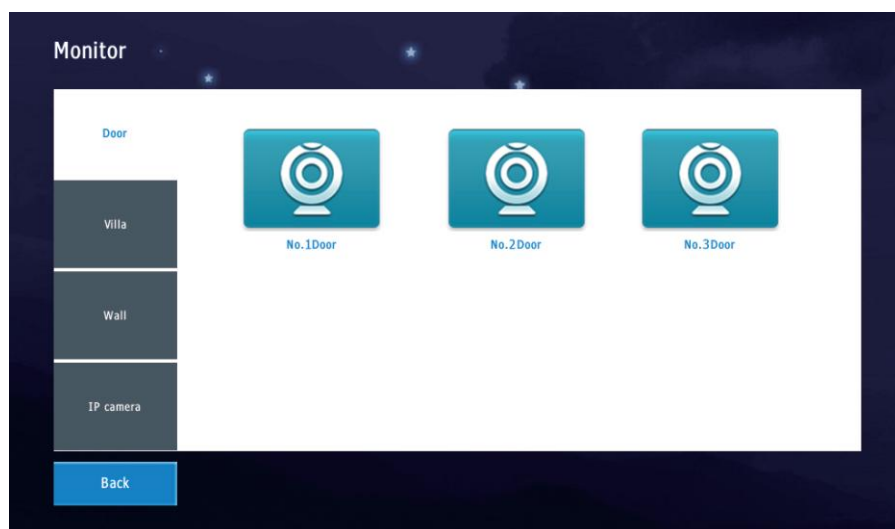


### (6) Leave Msg record

If no one answers the call after the timeout, you can record a voice message.

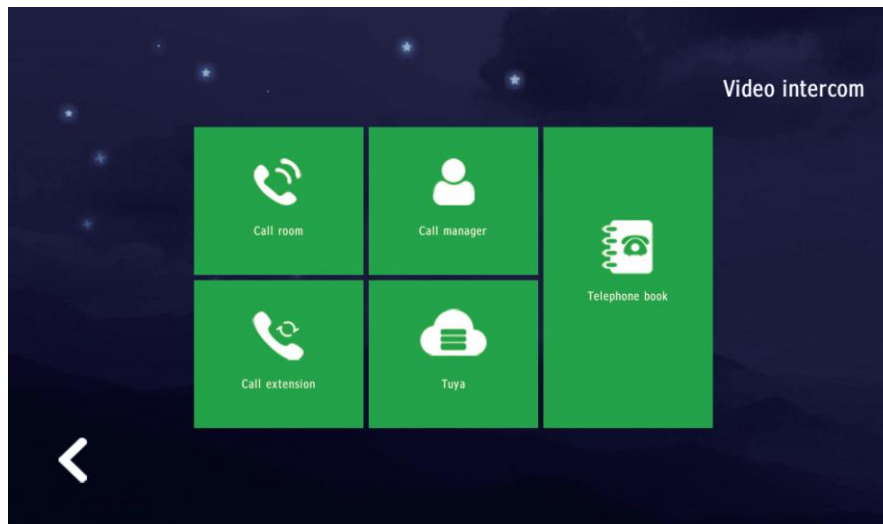


## 3. Monitor

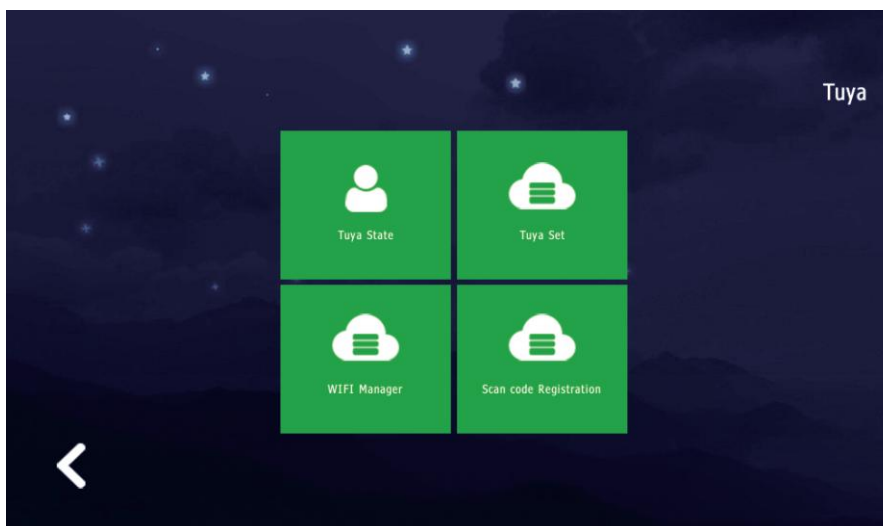


- (1) Door: outdoor station of apartment building.
- (2) Villa: outdoor station for villa.
- (3) Wall: outdoor station of community gate.
- (4) IP camera: security cameras.

## 4.Video intercom



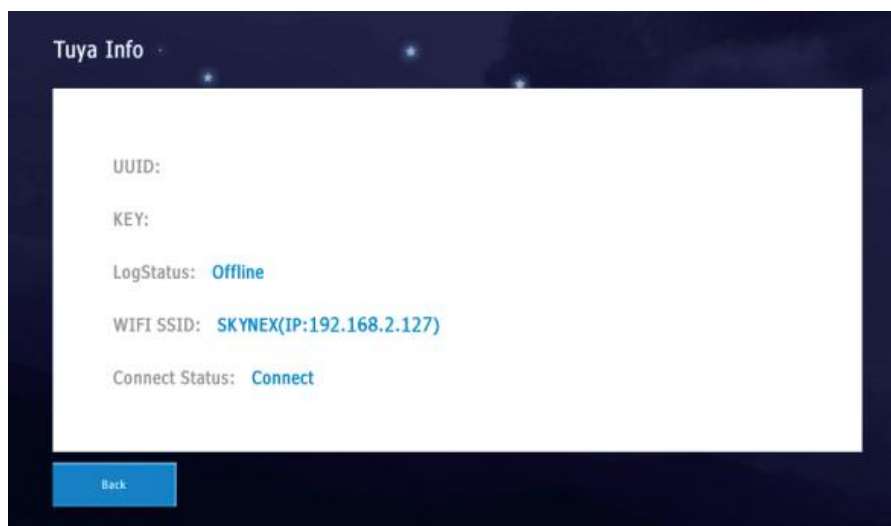
- (1) Call room: call other rooms in the apartment.
- (2) Call manager: call guard station and management center.
- (3) Call extension: call other monitors in this Room number.
- (4) Tuya: connect Wi-Fi and Tuya App.



### I. Tuya state

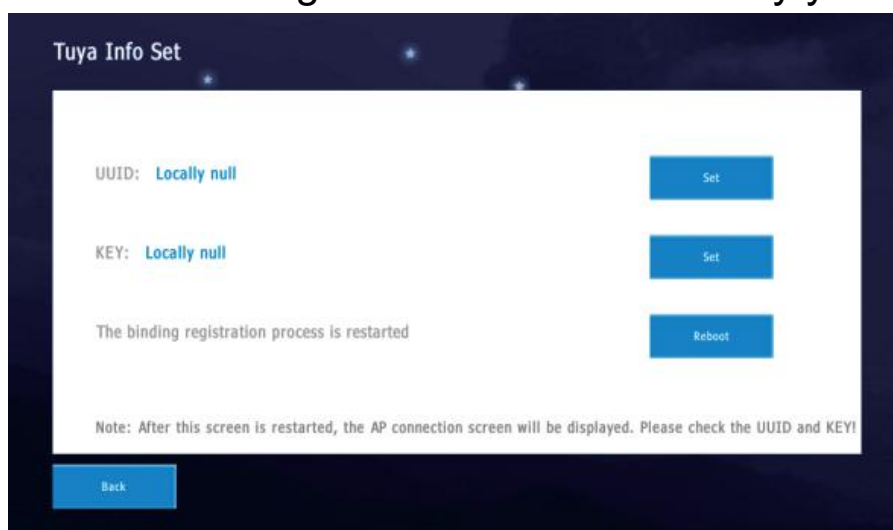
LogStatus: status of binding with Tuya.

Connect Status: status of connecting Wi-Fi.



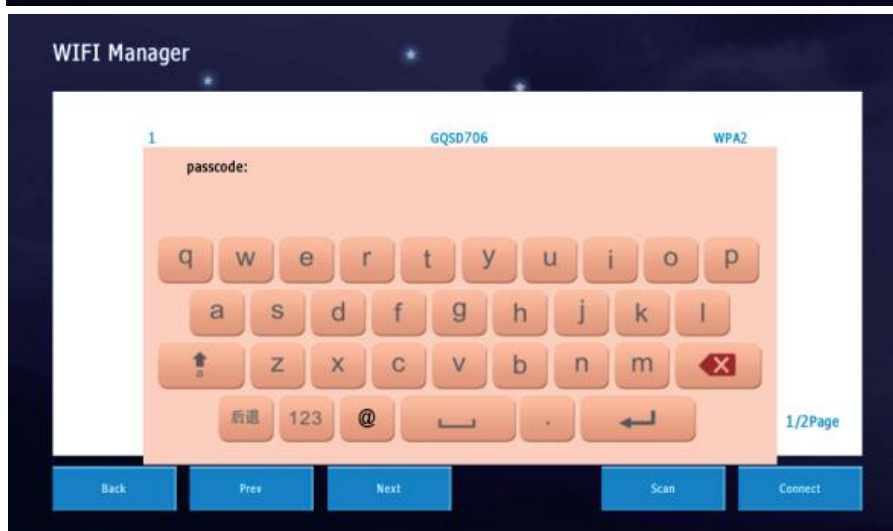
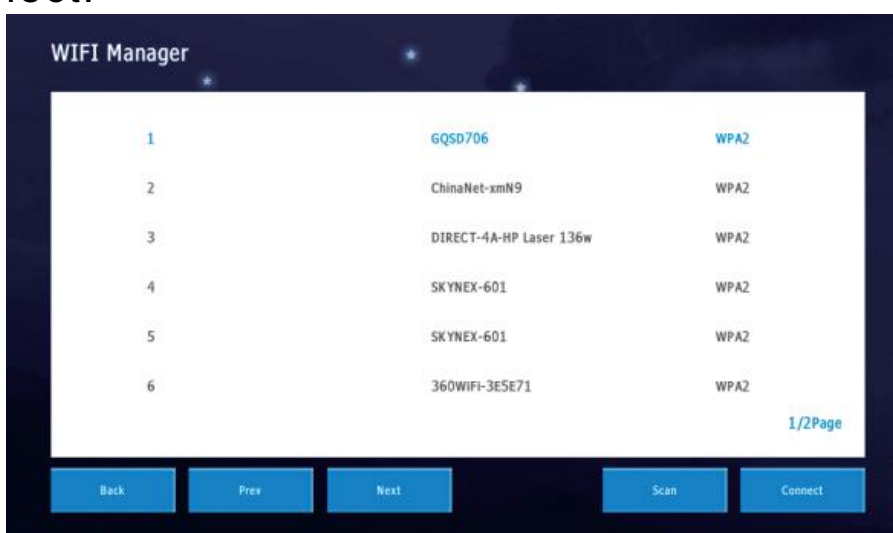
## II. Tuya set

Please do not change the UUID and KEY by yourself



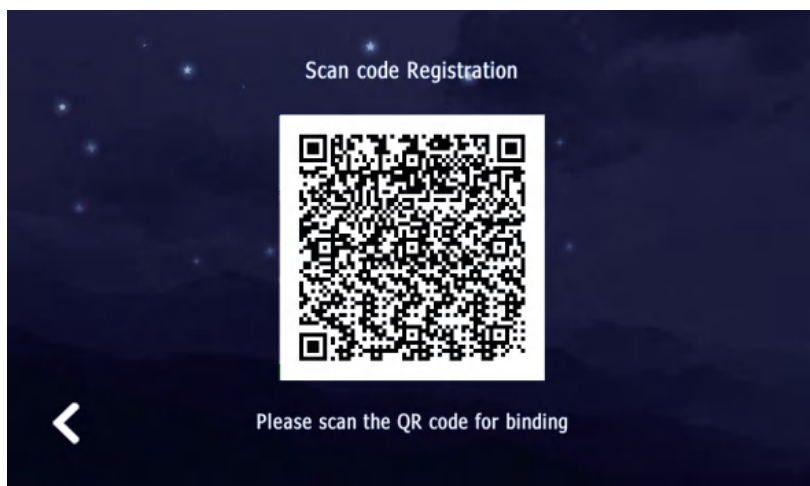
## III. WIFI Manager

Find and choose WiFi, then press Connect. And input password to connect.

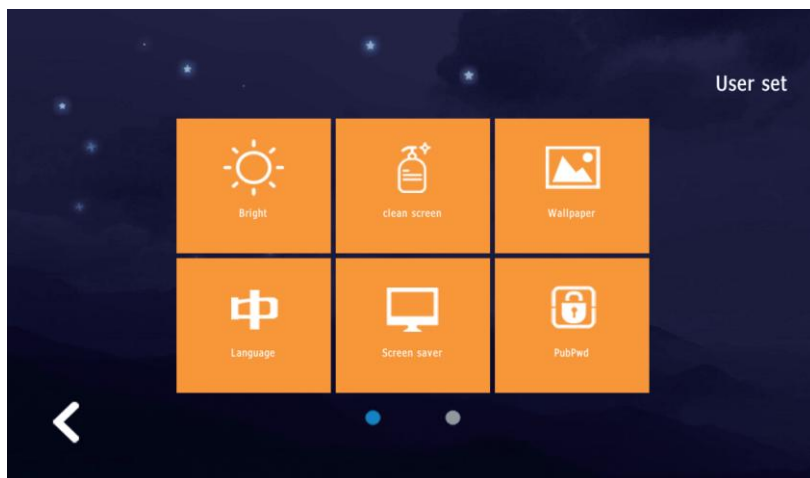
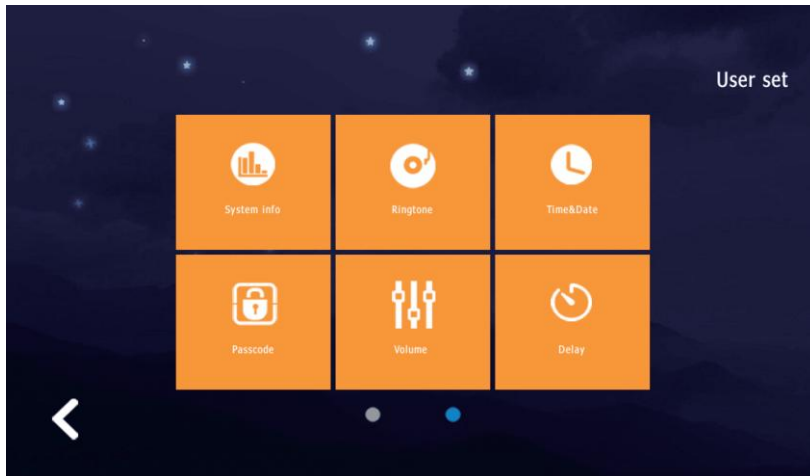


## IV. Scan code Registration

After connecting to WiFi, open Tuya App and scan the QR code to bind.

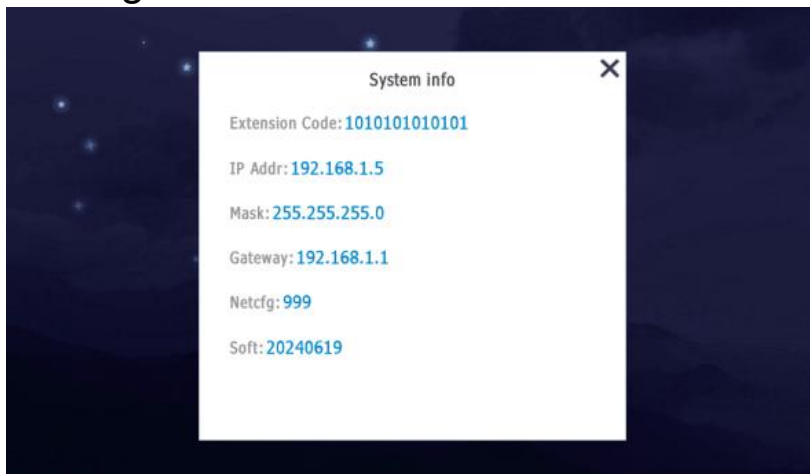


## 5. User set



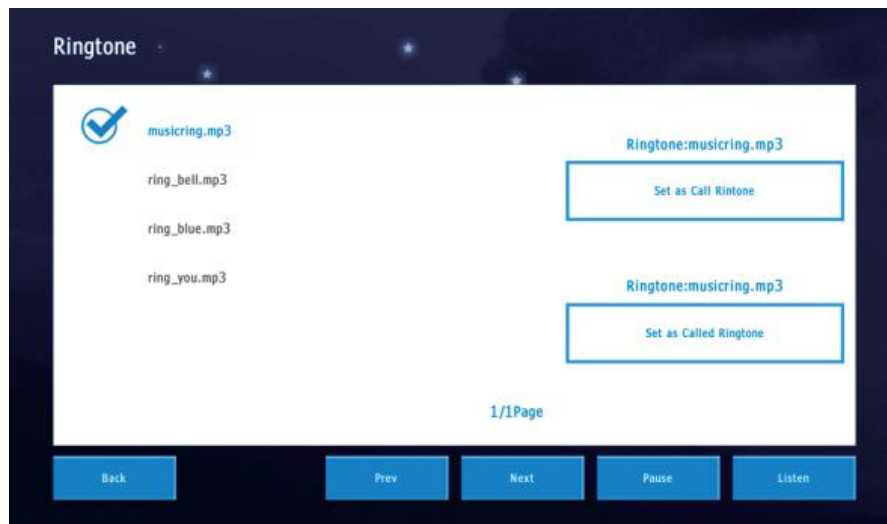
### (1) System info

Show device's address code, IP address, subnet mask, gateway, netcfg version and software version.



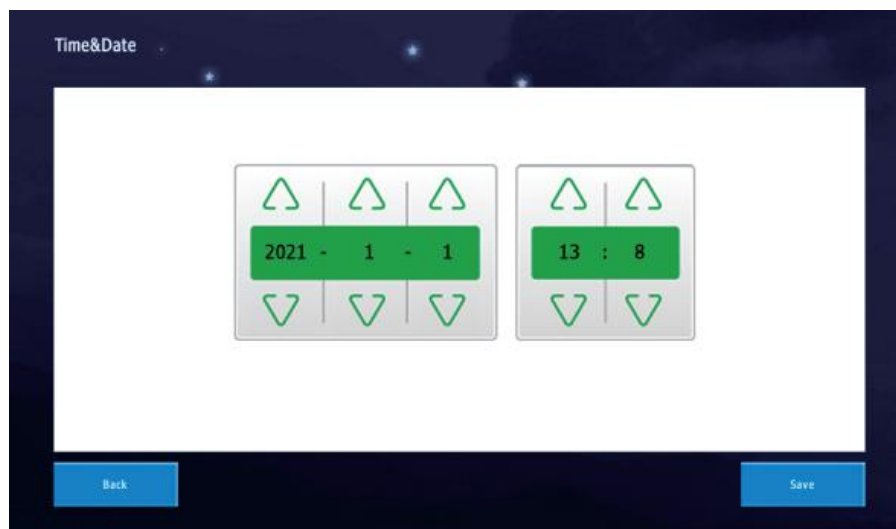
## (2) Ringtone

Set calling and called ringtones.



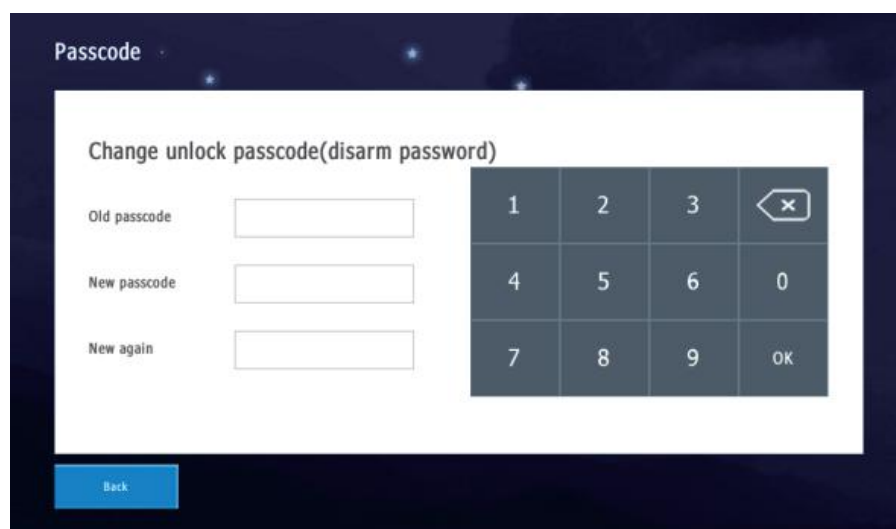
## (3) Time&Date

Set time and date.



## (4) Passcode (default: 123456)

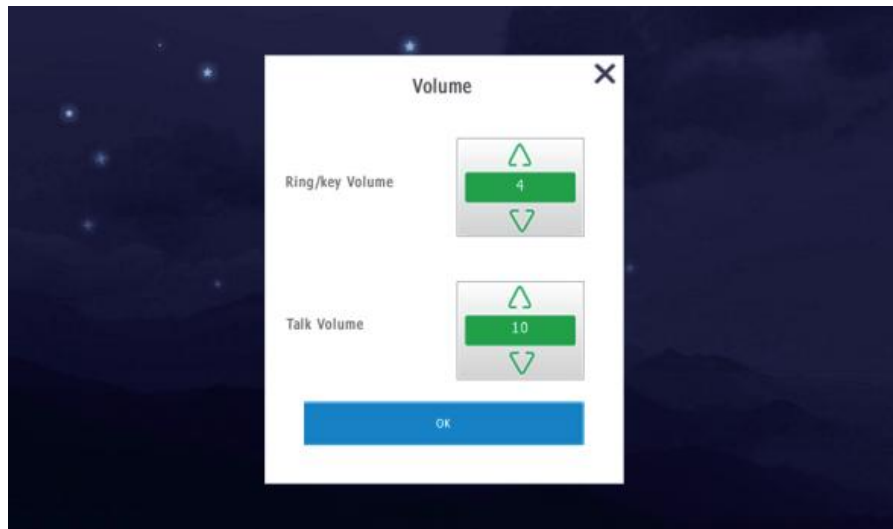
Change personal unlock password and disarm password.





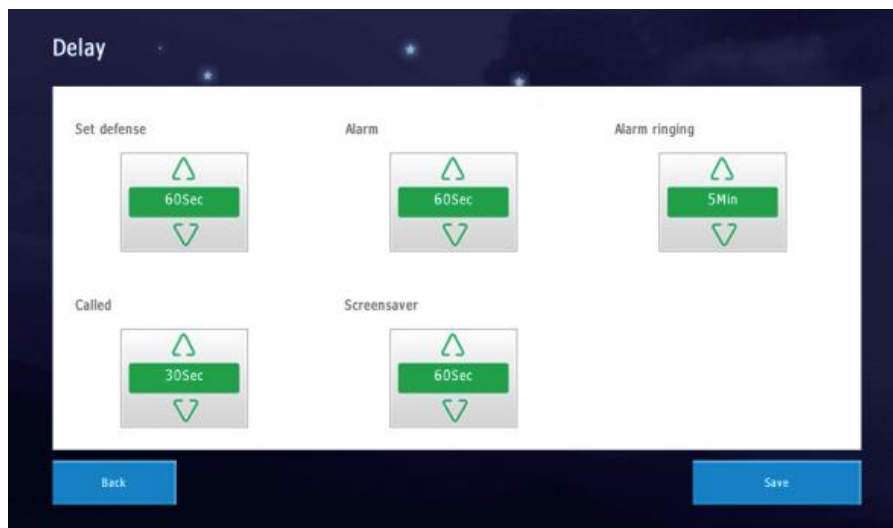
## (5) Volume

Set ring, key and talk volume.



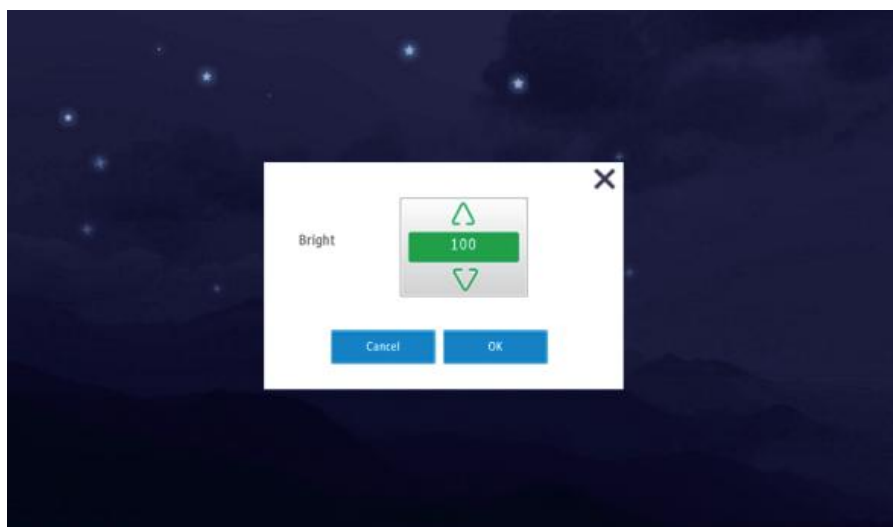
## (6) Delay

Arming delay, alarm delay, alarm duration, call ringing tone duration, Screensaver trigger time.



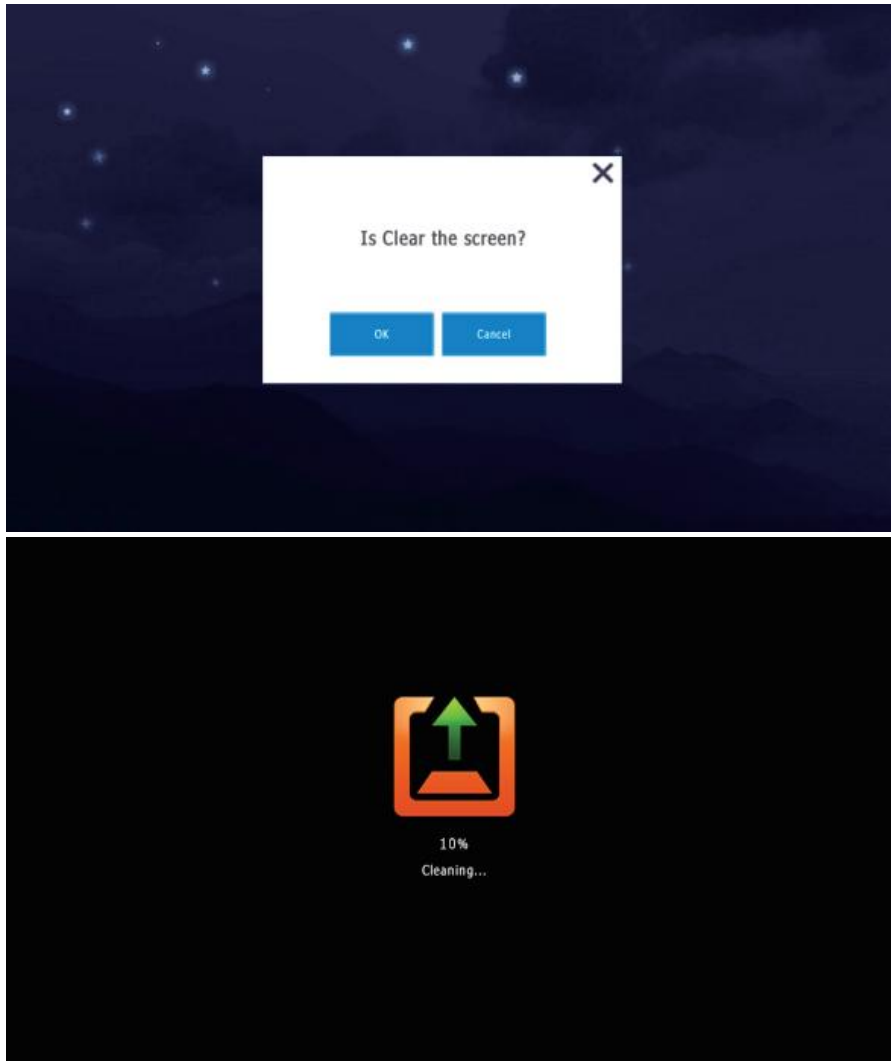
## (7) Bright

Adjust screen brightness.



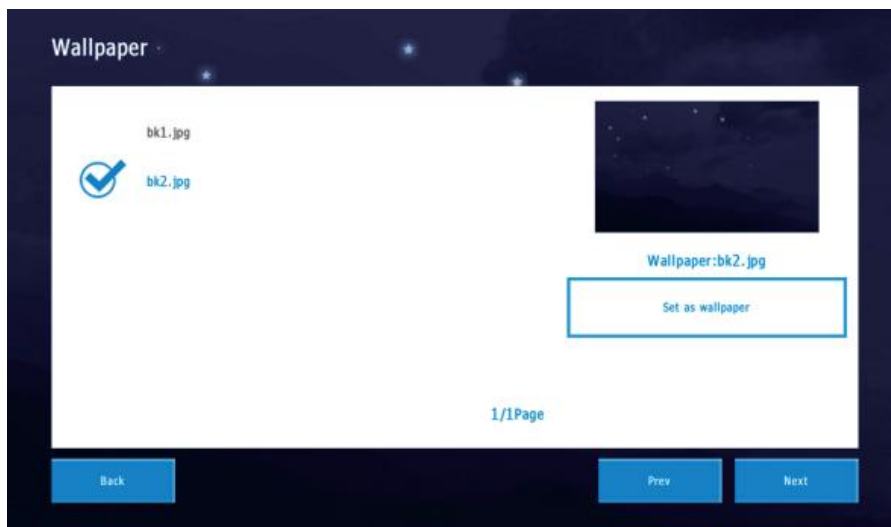
## (8) Clean screen

To help users avoid misoperation when cleaning the screen.



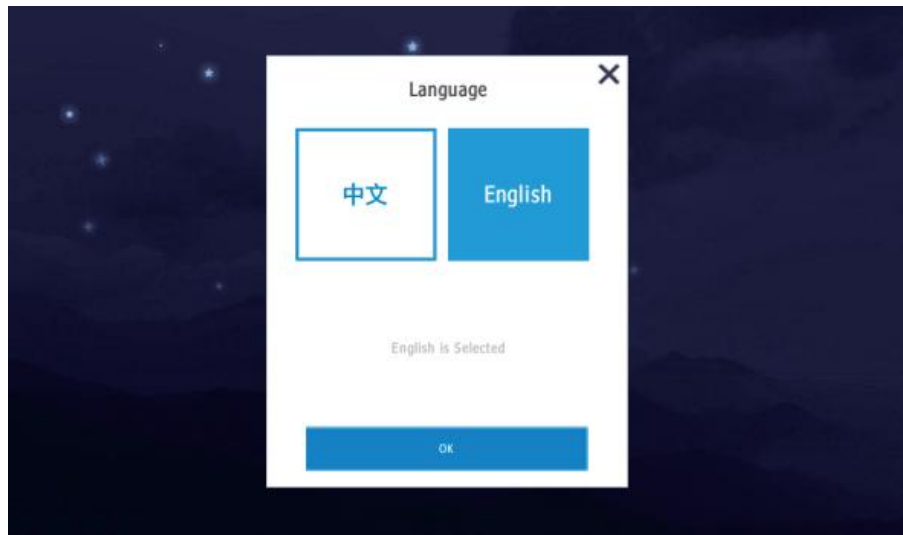
## (9) Wallpaper

Change wallpaper

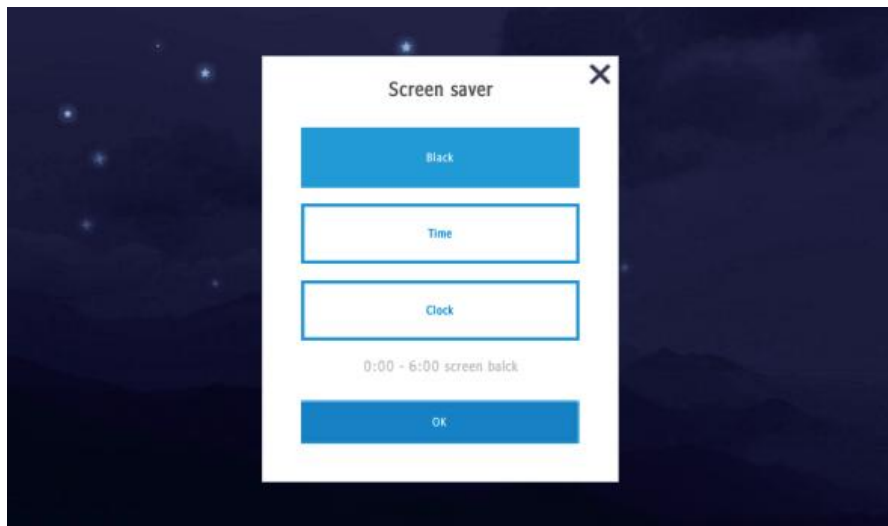


## (10) Language

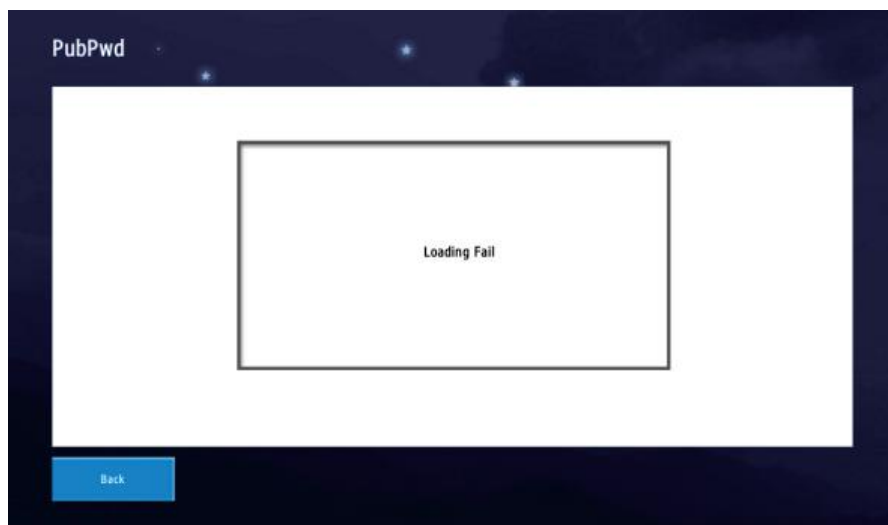
The system provides 2 language settings. Available options: English, Turkish, Spanish or customized.



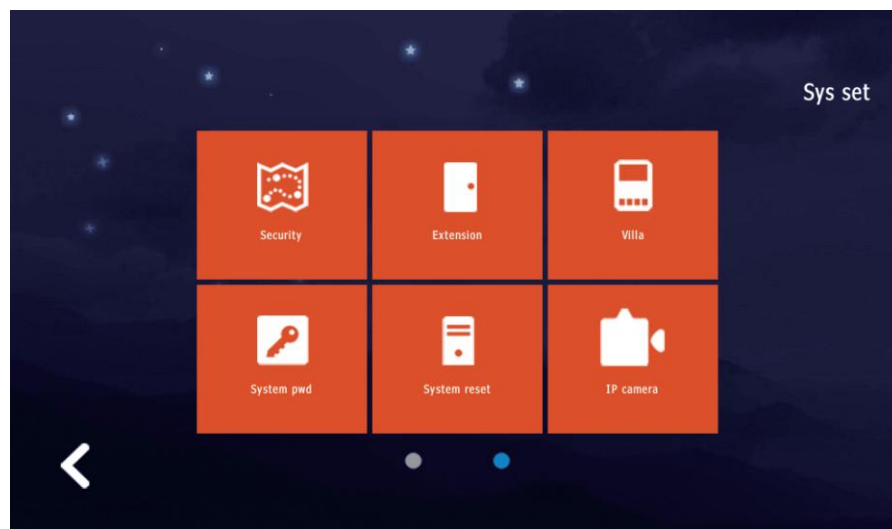
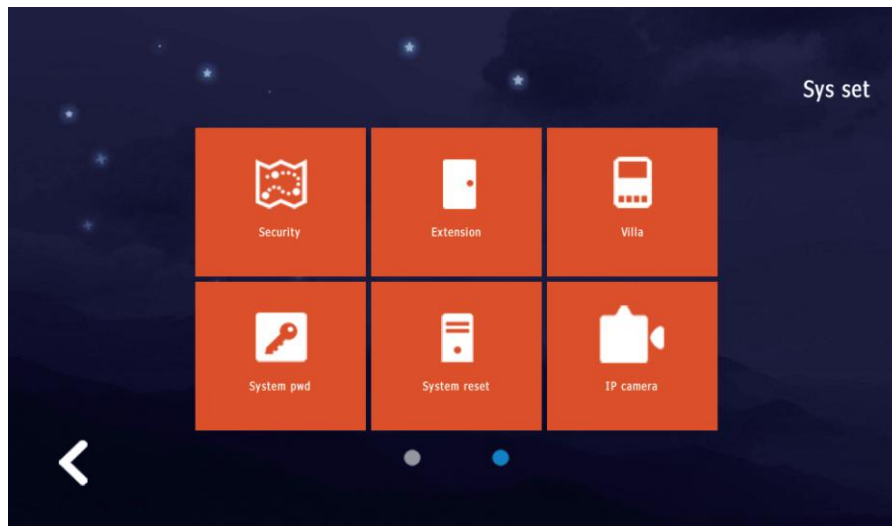
(11) Screen saver  
Set screen saver.



(12) PubPwd  
Check the public unlock password of outdoor station.



## 6.Sys set(Default Password “666666”)



### (1)Security

Set the detector type, whether to enable it, and how to trigger it for each room(Up to 8 detectors or alarms).

Security

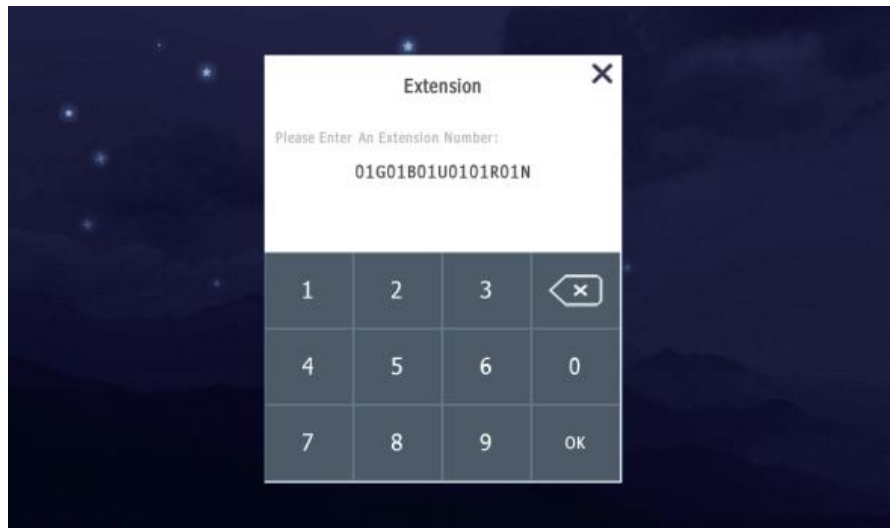
| Area    | Type  | Valid   | Level |
|---------|-------|---------|-------|
| Kitchen | Smoke | Invalid | On    |
| Kitchen | Smoke | Invalid | On    |
| Kitchen | Smoke | Invalid | On    |
| Kitchen | Smoke | Invalid | On    |

1/2Page

Back Prev Next Save

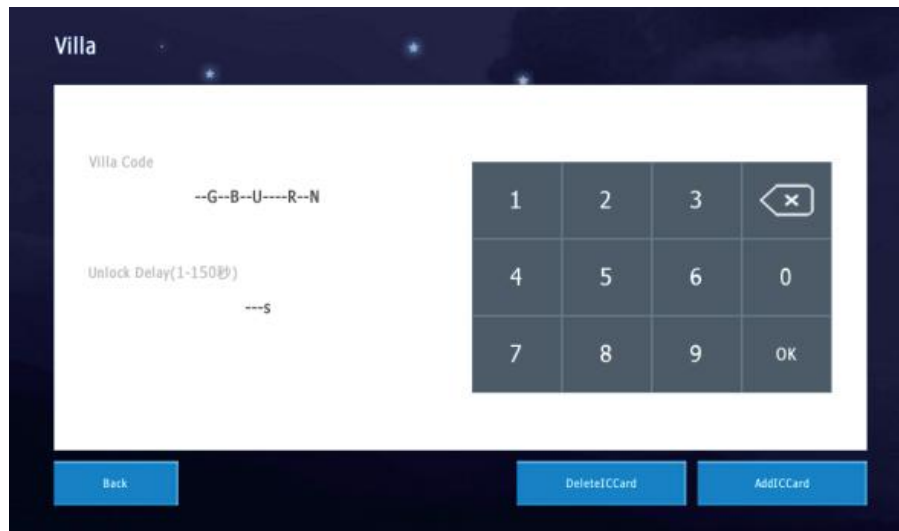
### (2)Extension

Set monitor's address code



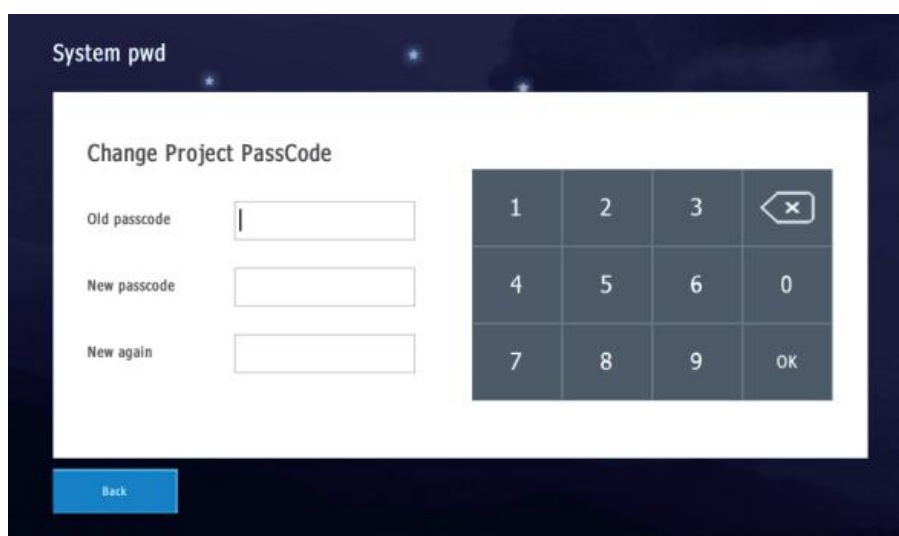
### (3)Villa

Delete or Add IC/ID cards. The villa outdoor station should support card reading.



### (4)System pwd

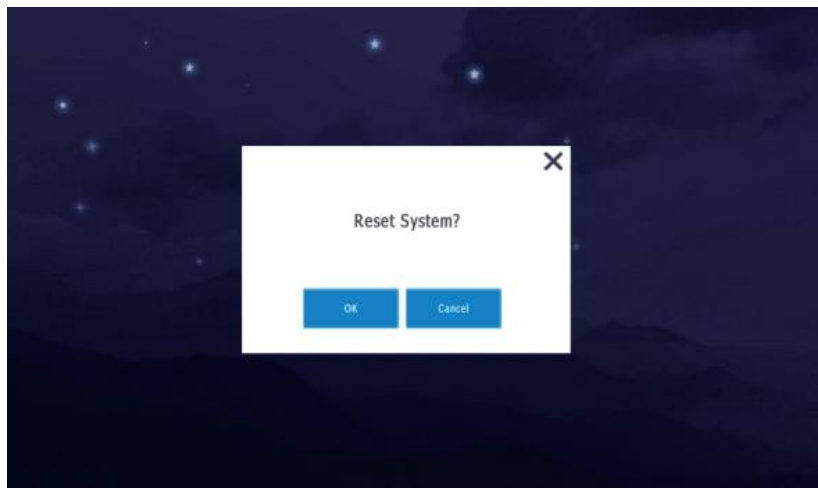
Change system password.



### (5)System reset

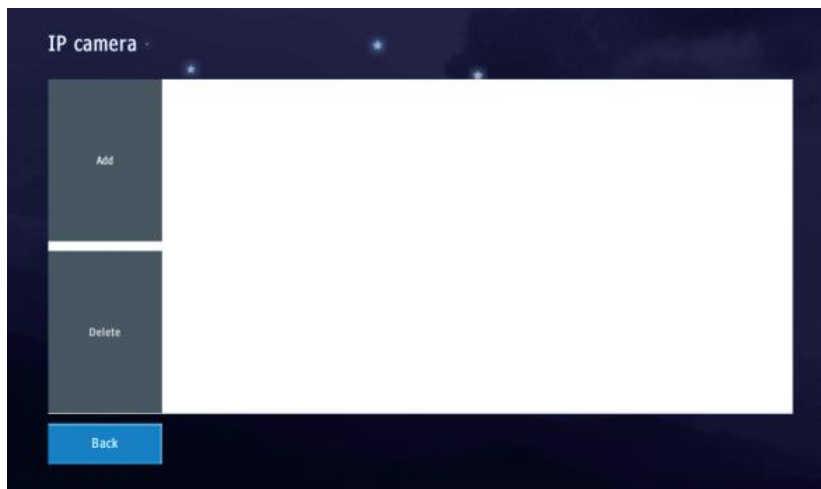
Reset system to initial settings.



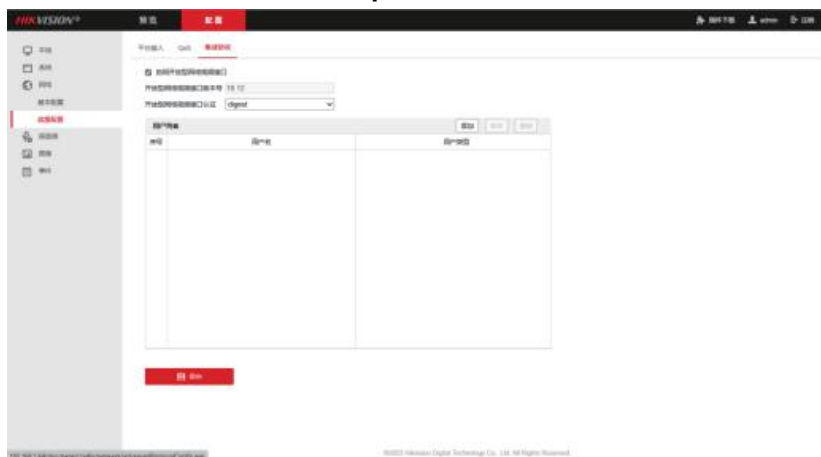


## (6) IP camera

Add or delete IP camera.



I. Add IP camera. In Network-Advanced Settings-Integration Protocol, enable the ONVIF protocol and add a new video user.



II. Press “Add”, name the camera to be added.



III. Input the IP address of the camera.

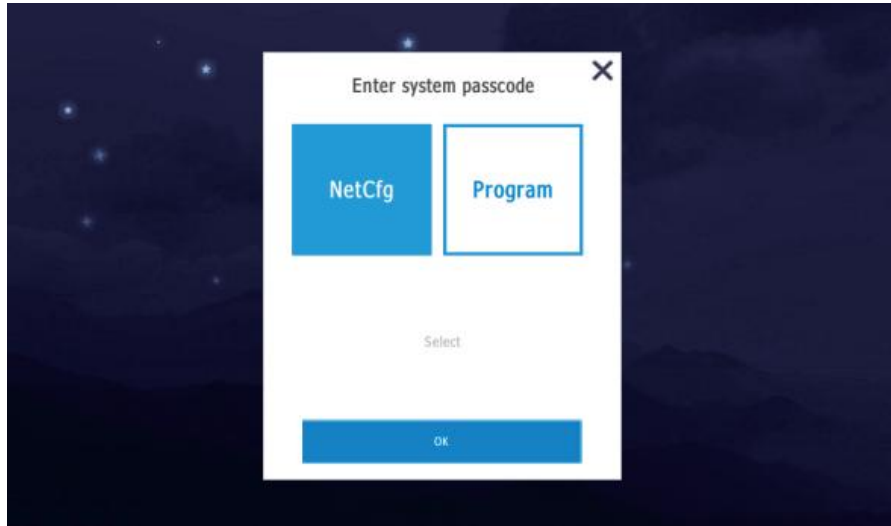
IV. Input video user's username.

V. Input video user's password. Then added camera successfully.



## (7)Upgrade

Upgrading software and netcfg configuration file via SD card  
(Not supported).



# Specifications

---

## Indoor Monitor

- 7 inch LCD 1024\*600 pixel
- Power adapter or POE
- DC 12-24V Power
- ABS Plastic + PET
- Support WIFI 2.4G
- Operating Temperature: -30°C~ +60°C
- Dimensions: 230\*145\*26mm
- Color: white+silver / black+grey optional
- Language: English/ Spanish / Turkish / Customize

## Villa Outdoor Station

- HD 1080P , 2MP Camera
- DC 12–24V power from indoor monitor or POE
- Aluminum alloy +Acrylic panel material
- Operating Temperature: -40°C~ +70°C
- Color: white +silver
- Dimensions: 122\*48\*20mm

# Operations

---

## Video Conference Call

To call the monitor, press the button on call panel. Then, the monitor shows image of the call panel. Touch the button shown on the screen. to answer or hang up or unlock the door.

## Monitor

- To monitor call panel, touch the monitor button on the screen.
- Touch call panel name to switch between call panels.
- Touch photo button to record manually.
- Touch sound button to adjust volume.
- Touch unlock button to unlock the door.
- Touch MIC button to mute.
- Touch hang up button to finish monitoring.

## Photo

- When call panel calls the monitor, monitor will take a photo automatically if no one answers the call.
- While monitoring, touch the snapshot button to take a picture.
- To check records, touch the photo on the screen.



## Setting

|                 |  |
|-----------------|--|
| Ringtone        | Set ringtones for indoor monitor                   |
| Record          | Call records, photo or video according to settings |
| Date&Time       | Set date and time                                  |
| Turn Off Screen | Set screen off time                                |
| Delete          | Delete all photos or videos                        |
| Language        | Spanish / Turkish / English / Customize            |
| Information     | Check monitor information.                         |
| Reset           | Restore factory settings                           |

## FAQ

| NO | Malfunction  | Reason   | Solution   |
|----|--|--|--|
| 1  | Outdoor station can't call indoor monitor.   | 1. Indoor monitor got reset<br>2. Network cable quality or different standard. | 1. In "sys set"-"address", set address as "010101010101".<br>2. Use a T568B standard and good quality network cable.   |
| 2  | Before installation, it worked well. After installation, it can't call successfully. | 1. Network cable quality<br>2. Insufficient power supply voltage.              | 1. Use a good quality network cable.<br>2. Use a power adapter with output DC18V-24V, if the network cable is over 40 meters.  |
| 3  | When visitor was calling, only one of monitors is working.                           | 1. Room number is the same.  | 1. For example, the address of one monitor is "010101010101", and the address of another should be "010101010102". If there are more screens, then the address should be "010101010103", "010101010104" and so on. |
| 4  | Why can't open the lock.   | 1. Not use a power supply controller.<br>2. Connect the wrong wire.            | 1. Use a power supply controller to power and control the lock.<br>2. Please get and check the wiring diagram or video from technical support.   |
| 5  | Why the indoor unit can't connect to the APP?  | 1. The internet might not be good.   | 1. Try again when the network is stable.   |